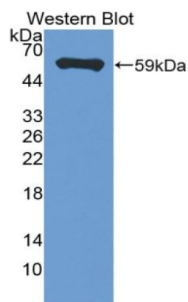
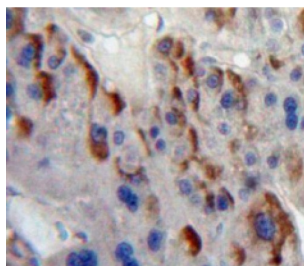


B-Lymphocyte Antigen CD20 (MS4A1) Antibody

Catalogue No.: abx129338



Western blot analysis of the recombinant protein.



IHC-P analysis of Liver tissue, with DAB staining.

Membrane Spanning 4 Domains Subfamily A, Member 1 Antibody is a Rabbit Polyclonal against Membrane Spanning 4 Domains Subfamily A, Member 1.

Target: B-Lymphocyte Antigen CD20 (MS4A1)

Clonality: Polyclonal

Reactivity: Mouse

Tested Applications: WB, IHC, IF/ICC

Host: Rabbit

Recommended dilutions: WB: 0.01-2 µg/ml, IHC: 5-20 µg/ml, IF/ICC: 5-20 µg/ml. Optimal dilutions/concentrations should be determined by the end user.

Conjugation: Unconjugated

Immunogen: MS4A1 (Pro6-Lys251)

Form: Liquid

Purification: Purified by antigen-specific affinity chromatography, followed by Protein A affinity chromatography.

Datasheet

Version: 2.0.0

Revision date: 10 Oct 2025



Storage: Aliquot and store at -20°C. Avoid repeated freeze/thaw cycles.

Buffer: 0.01 M PBS, pH 7.4, containing 0.05% Proclin-300, 50% glycerol.

Note: THIS PRODUCT IS FOR RESEARCH USE ONLY. NOT FOR USE IN DIAGNOSTIC, THERAPEUTIC OR COSMETIC PROCEDURES. NOT FOR HUMAN OR ANIMAL CONSUMPTION.

For Reference Only