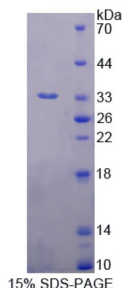


Human Microtubule Associated Protein RP/EB Family, Member 1 (MAPRE1) Protein

Catalogue No.: abx166087



SDS-PAGE analysis of Microtubule Associated Protein RP/EB Family, Member 1 Protein.

Microtubule Associated Protein RP/EB Family, Member 1 is a recombinant Human protein expressed in E. coli.

Target:	Microtubule Associated Protein RP/EB Family, Member 1 (MAPRE1)
Origin:	Human
Expression:	Recombinant
Tested Applications:	WB, SDS-PAGE
Host:	E. coli
Conjugation:	Unconjugated
Form:	Lyophilized
Activity:	Not tested
Purity:	> 95%
Reconstitution:	To keep the original salt concentration, we recommend reconstituting to the original concentration prior to lyophilization (see Concentration) in ddH ₂ O. If a lower concentration is required, dilute in PBS, pH 7.4. If a higher concentration is required, the product can be reconstituted directly in PBS, pH 7.4, though please note that this will change the overall salt concentration. The stock concentration should be between 0.1-1.0 mg/ml. Do not vortex.
Storage:	Store at 2-8°C for up to one month. For long-term storage, store at -80°C. Avoid repeated freeze/thaw cycles.
UniProt Primary AC:	Q15691 (UniProt , ExPASy)

Datasheet

Version: 2.0.0
Revision date: 11 Oct 2025



KEGG: hsa:22919

String: [9606.ENSP00000364721](#)

Molecular Weight: Calculated MW: 33.7 kDa

Sequence Fragment: Ala2-Tyr268

Tag: N-terminal His tag

Buffer: Prior to lyophilization: PBS, pH 7.4, containing 0.01% Sarcosyl, 1 mM DTT, 5% Trehalose and Proclin-300.

Concentration: Prior to lyophilization: 200 µg/ml

Note: THIS PRODUCT IS FOR RESEARCH USE ONLY. NOT FOR USE IN DIAGNOSTIC, THERAPEUTIC OR COSMETIC PROCEDURES. NOT FOR HUMAN OR ANIMAL CONSUMPTION.

For Reference Only