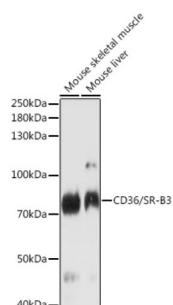


Platelet Glycoprotein 4 (CD36) Antibody

Catalogue No.: abx001251



Western blot analysis of extracts of various cell lines using CD36/SR-B3 Antibody (1/1000 dilution).

CD36 Antibody is a Rabbit Polyclonal antibody against CD36. CD36, also named as GP3B and GP4, seems to have numerous potential physiological functions. CD36 binds to collagen, thrombospondin, anionic phospholipids, long chain fatty acids and may function in the transport and/or as a regulator of fatty acid transport and oxidized LDL. CD36 may function as a cell adhesion molecule. It mediates cytoadherence of Plasmodium falciparum parasitized erythrocytes. Mutation of CD36 will cause platelet glycoprotein IV deficiency which known as CD36 deficiency. Genetic variations in CD36 are associated with susceptibility to coronary heart disease type 7 (CHDS7). This antibody 18836-1-AP is raised against a synthesized peptide of 100-116 amino acids of CD36.

Target: Platelet Glycoprotein 4 (CD36)

Clonality: Polyclonal

Reactivity: Human, Mouse

Tested Applications: WB

Host: Rabbit

Recommended dilutions: WB: 1/500 - 1/2000. Optimal dilutions/concentrations should be determined by the end user.

Conjugation: Unconjugated

Immunogen: A synthetic peptide corresponding to human CD36/SR-B3

Isotype: IgG

Form: Liquid

Purification: Purified by affinity chromatography.

Storage: Aliquot and store at -20°C. Avoid repeated freeze/thaw cycles.

UniProt Primary AC: P16671 ([UniProt](#), [ExPASy](#))

Datasheet

Version: 4.0.0

Revision date: 10 Jul 2025



Gene Symbol: CD36

GeneID: [948](#)

NCBI Accession: NP_001120916.1

KEGG: hsa:948

String: [9606.ENSP00000399421](#)

Molecular Weight: Calculated MW: 32 kDa/46 kDa/48 kDa/53 kDa
Observed MW: 80 kDa

Buffer: PBS, pH 7.3, containing 0.05% Proclin-300, 50% glycerol.

Concentration: 1 mg/ml

Note: THIS PRODUCT IS FOR RESEARCH USE ONLY. NOT FOR USE IN DIAGNOSTIC, THERAPEUTIC OR COSMETIC PROCEDURES. NOT FOR HUMAN OR ANIMAL CONSUMPTION.

For Reference Only