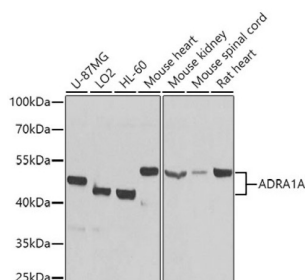
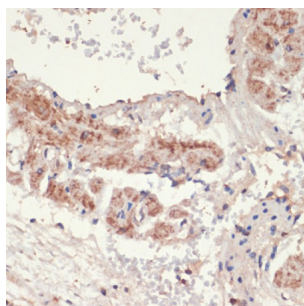


Alpha 1A Adrenergic Receptor (ADRA1A) Antibody

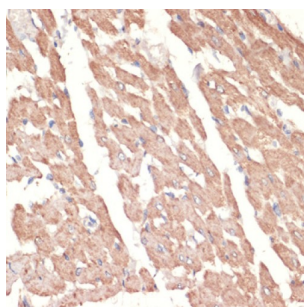
Catalogue No.: abx001252



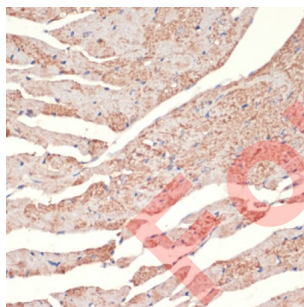
Western blot analysis of extracts of various cell lines using ADRA1A Antibody (1/1000 dilution).



Immunohistochemistry of paraffin-embedded Rat lung using ADRA1A Antibody (1/100 dilution, 40x lens).



Immunohistochemistry of paraffin-embedded Rat heart using ADRA1A Antibody (1/100 dilution, 40x lens).



Immunohistochemistry of paraffin-embedded Mouse heart using ADRA1A Antibody (1/100 dilution, 40x lens).

ADRA1A Antibody is a Rabbit Polyclonal antibody against ADRA1A. ADRA1A, also named as ADRA1C, belongs to the G-protein coupled receptor 1 family. ADRA1A mediates its action by association with G proteins that activate a phosphatidylinositol-calcium second messenger system. Its effect is mediated by G(q) and G(11) proteins. The antibody is specific to ADRA1A.

Target: Alpha 1A Adrenergic Receptor (ADRA1A)

Clonality: Polyclonal

Datasheet

Version: 3.0.0
Revision date: 23 May 2025



Reactivity:	Human, Mouse, Rat
Tested Applications:	WB, IHC
Host:	Rabbit
Recommended dilutions:	WB: 1/500 - 1/2000, IHC-P: 1/50 - 1/100. Not tested in IHC-F. Optimal dilutions/concentrations should be determined by the end user.
Conjugation:	Unconjugated
Immunogen:	Recombinant fusion protein corresponding to human ADRA1A
Isotype:	IgG
Form:	Liquid
Purification:	Purified by affinity chromatography.
Storage:	Aliquot and store at -20°C. Avoid repeated freeze/thaw cycles.
UniProt Primary AC:	P35348 (UniProt , ExPASy)
Gene Symbol:	ADRA1A
GeneID:	148
NCBI Accession:	NP_150646.3
KEGG:	hsa:148
String:	9606.ENSP00000369960
Molecular Weight:	Calculated MW: 32-52 kDa Observed MW: 51 kDa
Buffer:	PBS, pH 7.3, containing 0.02% sodium azide, 50% glycerol.
Concentration:	1 mg/ml
Note:	THIS PRODUCT IS FOR RESEARCH USE ONLY. NOT FOR USE IN DIAGNOSTIC, THERAPEUTIC OR COSMETIC PROCEDURES. NOT FOR HUMAN OR ANIMAL CONSUMPTION.