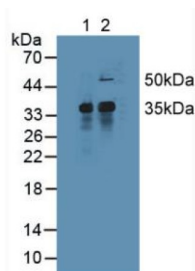
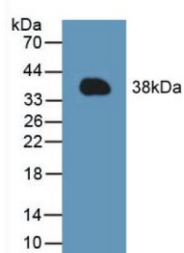


Induced Myeloid Leukemia Cell Differentiation Protein (MCL1) Antibody

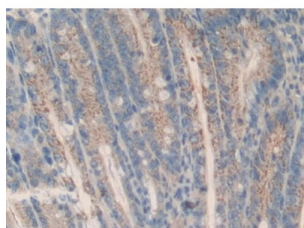
Catalogue No.: abx129693



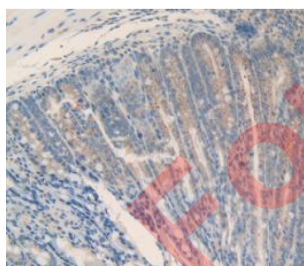
Western blot analysis of (1) Mouse Liver Tissue and (2) Mouse Spleen Tissue.



Western blot analysis of recombinant Mouse MCL1.



IHC-P analysis of Mouse Intestine Tissue, with DAB staining.



IHC-P analysis of Mouse Intestine Tissue, with DAB staining.

Myeloid Cell Leukemia Sequence 1, Bcl2 Related Antibody is a Rabbit Polyclonal against Myeloid Cell Leukemia Sequence 1, Bcl2 Related.

Target: Induced Myeloid Leukemia Cell Differentiation Protein (MCL1)

Clonality: Polyclonal

Datasheet

Version: 4.0.0
Revision date: 29 Sep 2025



Reactivity:	Mouse
Tested Applications:	WB, IHC, IF/ICC
Host:	Rabbit
Recommended dilutions:	WB: 0.01-2 µg/ml, IHC: 5-20 µg/ml, IF/ICC: 5-20 µg/ml. Optimal dilutions/concentrations should be determined by the end user.
Conjugation:	Unconjugated
Immunogen:	MCL1 (Glu66-Gly307)
Form:	Liquid
Purification:	Purified by antigen-specific affinity chromatography, followed by Protein A affinity chromatography.
Storage:	Aliquot and store at -20°C. Avoid repeated freeze/thaw cycles.
UniProt Primary AC:	P97287 (UniProt , ExPASy)
KEGG:	mmu:17210
String:	10090.ENSMUSP00000044048
Buffer:	0.01 M PBS, pH 7.4, containing 0.05% Proclin-300, 50% glycerol.
Concentration:	1 mg/ml
Note:	THIS PRODUCT IS FOR RESEARCH USE ONLY. NOT FOR USE IN DIAGNOSTIC, THERAPEUTIC OR COSMETIC PROCEDURES. NOT FOR HUMAN OR ANIMAL CONSUMPTION.