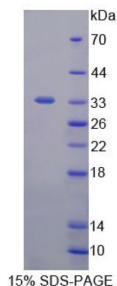


Human Protein kinase C-binding protein NELL2 (NELL2) Protein

Catalogue No.: abx167829



SDS-PAGE analysis of NEL Like Protein 2 Protein.

Protein kinase C-binding protein NELL2 (NELL2) is a recombinant Human protein expressed in *E. coli*.

Target:	Protein kinase C-binding protein NELL2 (NELL2)
Origin:	Human
Expression:	Recombinant
Tested Applications:	WB, SDS-PAGE
Host:	<i>E. coli</i>
Conjugation:	Unconjugated
Form:	Lyophilized
Purity:	> 90%
Reconstitution:	To keep the original salt concentration, we recommend reconstituting to the original concentration prior to lyophilization (see Concentration) in ddH ₂ O. If a lower concentration is required, dilute in PBS, pH 7.4. If a higher concentration is required, the product can be reconstituted directly in PBS, pH 7.4, though please note that this will change the overall salt concentration. The stock concentration should be between 0.1-1.0 mg/ml. Do not vortex.
Storage:	Store at 2-8 °C for up to one month. Store at -80 °C for up to one year. Avoid repeated freeze/thaw cycles.
UniProt Primary AC:	Q99435 (UniProt , ExPASy)
Gene Symbol:	NELL2
KEGG:	hsa:4753

Datasheet

Version: 2.0.0

Revision date: 26 Jun 2025



String: [9606.ENSPO0000416341](#)

Molecular Weight: Calculated MW: 34.4 kDa

Sequence Fragment: Pro64-Lys331

Tag: N-terminal His tag

Buffer: Prior to lyophilization: PBS, pH 7.4, containing 0.01% Sarcosyl, 1 mM DTT, 5% Trehalose and Proclin-300.

Activity: Not tested

Concentration: Prior to lyophilization: 200 µg/ml

Note: THIS PRODUCT IS FOR RESEARCH USE ONLY. NOT FOR USE IN DIAGNOSTIC, THERAPEUTIC OR COSMETIC PROCEDURES. NOT FOR HUMAN OR ANIMAL CONSUMPTION.

For Reference Only