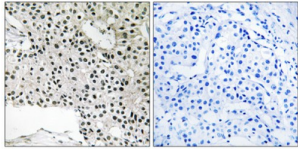


## Transcription Elongation Factor A Like 4 (TCEAL4) Antibody

Catalogue No.: abx014954



Immunohistochemistry analysis of paraffin-embedded human breast carcinoma tissue using TCEAL4 antibody.

Rabbit polyclonal antibody against TCEAL4 protein. Immunogen region is C-terminal.

<b>Target:</b>	Transcription Elongation Factor A Like 4 (TCEAL4)
<b>Clonality:</b>	Polyclonal
<b>Reactivity:</b>	Human
<b>Tested Applications:</b>	ELISA, IHC
<b>Host:</b>	Rabbit
<b>Recommended dilutions:</b>	IHC: 1/50 - 1/100, ELISA: 1/20000. Optimal dilutions/concentrations should be determined by the end user.
<b>Conjugation:</b>	Unconjugated
<b>Immunogen:</b>	The antiserum was produced against synthesized peptide derived from C-terminal of human TCEAL4.
<b>Isotype:</b>	IgG
<b>Form:</b>	Liquid
<b>Purification:</b>	Purified from rabbit antiserum by affinity chromatography using epitope-specific immunogen.
<b>Storage:</b>	Aliquot and store at -20°C. Avoid repeated freeze/thaw cycles.
<b>UniProt Primary AC:</b>	Q96EI5 ( <a href="#">UniProt</a> , <a href="#">ExPASy</a> )
<b>KEGG:</b>	hsa:79921
<b>String:</b>	<a href="#">9606.ENSP00000361712</a>

# Datasheet

Version: 4.0.0

Revision date: 12 Sep 2025



**Sequence:** CRAPRRDIEDIPY

**Buffer:** PBS (without  $Mg^{2+}$  and  $Ca^{2+}$ ), pH 7.4, 150 mM NaCl, 0.02% sodium azide, 50% glycerol.

**Concentration:** 1 mg/ml

**Note:** THIS PRODUCT IS FOR RESEARCH USE ONLY. NOT FOR USE IN DIAGNOSTIC, THERAPEUTIC OR COSMETIC PROCEDURES. NOT FOR HUMAN OR ANIMAL CONSUMPTION.

For Reference Only