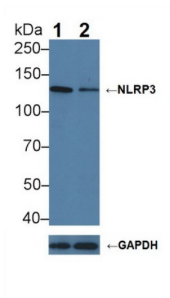
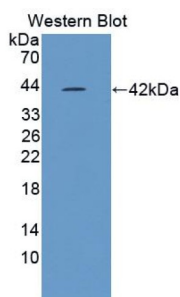


NLR Family, Pyrin Domain Containing Protein 3 (NLRP3) Antibody

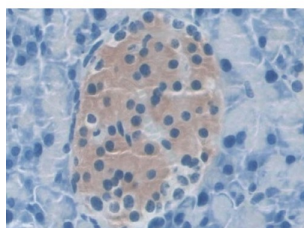
Catalogue No.: abx129489



Western blot analysis of (1) Wild-type K562 cell lysate, and (2) NLRP3 knockout K562 cell lysate, using Rabbit Anti-Mouse NLRP3 Antibody (1 µg/ml) and HRP-conjugated Goat Anti-Mouse antibody ([abx400001](#), 0.2 µg/ml).



Western blot analysis of the recombinant protein.



IHC-P analysis of Mouse Pancreas Tissue, with DAB staining.

NLR Family, Pyrin Domain Containing Protein 3 Antibody is a Rabbit Polyclonal against NLR Family, Pyrin Domain Containing Protein 3.

Target: NLR Family, Pyrin Domain Containing Protein 3 (NLRP3)

Clonality: Polyclonal

Reactivity: Mouse

Tested Applications: WB, IHC, IF/ICC

Host: Rabbit

Recommended dilutions: WB: 0.01-2 µg/ml, IHC: 5-20 µg/ml, IF/ICC: 5-20 µg/ml. Optimal dilutions/concentrations should be determined by the end user.

Datasheet

Version: 1.0.0

Revision date: 13 Jun 2025



Conjugation:	Unconjugated
Immunogen:	NLRP3 (Cys671-Trp1033)
Form:	Liquid
Purification:	Purified by antigen-specific affinity chromatography, followed by Protein A affinity chromatography.
Storage:	Aliquot and store at -20°C. Avoid repeated freeze/thaw cycles.
Buffer:	0.01 M PBS, pH 7.4, containing 0.05% Proclin-300, 50% glycerol.
Concentration:	1 mg/ml
Note:	THIS PRODUCT IS FOR RESEARCH USE ONLY. NOT FOR USE IN DIAGNOSTIC, THERAPEUTIC OR COSMETIC PROCEDURES. NOT FOR HUMAN OR ANIMAL CONSUMPTION.

For Reference Only