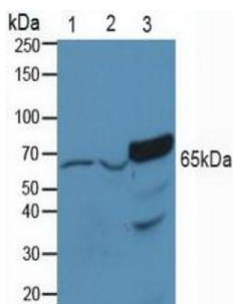
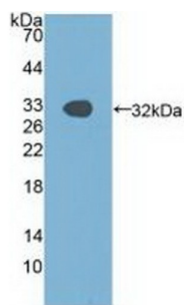


p21 Protein Activated Kinase 1 (PAK1) Antibody

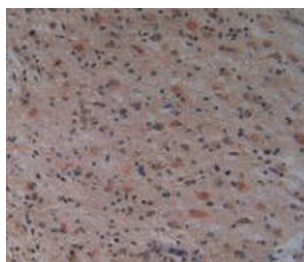
Catalogue No.: abx128879



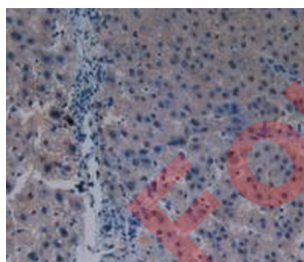
Western blot analysis of (1) Human HeLa cells, (2) Human Jurkat Cells and (3) Rat Brain Tissue.



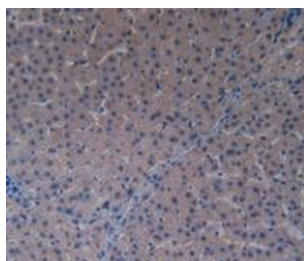
Western blot analysis of recombinant Human PAK1.



IHC-P analysis of Human Glioma Tissue, with DAB staining.



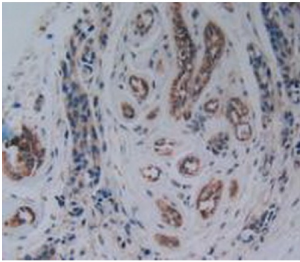
IHC-P analysis of Human Liver Tissue, with DAB staining.



IHC-P analysis of Human Liver Cancer Tissue, with DAB staining.

Datasheet

Version: 2.0.0
Revision date: 04 Jun 2025



IHC-P analysis of Human Breast Cancer Tissue, with DAB staining.

p21 Protein Activated Kinase 1 Antibody is a Rabbit Polyclonal against p21 Protein Activated Kinase 1.

Target:	p21 Protein Activated Kinase 1 (PAK1)
Clonality:	Polyclonal
Reactivity:	Human
Tested Applications:	WB, IHC, IF/ICC
Host:	Rabbit
Recommended dilutions:	WB: 0.01-2 µg/ml, IHC: 5-20 µg/ml, IF/ICC: 5-20 µg/ml. Optimal dilutions/concentrations should be determined by the end user.
Conjugation:	Unconjugated
Immunogen:	PAK1 (Glu252-Cys501)
Form:	Liquid
Purification:	Purified by antigen-specific affinity chromatography, followed by Protein A affinity chromatography.
Storage:	Aliquot and store at -20°C. Avoid repeated freeze/thaw cycles.
Buffer:	0.01 M PBS, pH 7.4, containing 0.05% Proclin-300, 50% glycerol.
Note:	THIS PRODUCT IS FOR RESEARCH USE ONLY. NOT FOR USE IN DIAGNOSTIC, THERAPEUTIC OR COSMETIC PROCEDURES. NOT FOR HUMAN OR ANIMAL CONSUMPTION.