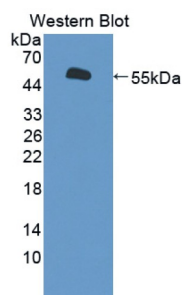


BPI Fold-Containing Family A Member 1 / PLUNC (BPIFA1) Antibody

Catalogue No.: abx128110



Western blot analysis of recombinant Human PLUNC.

BPI Fold-Containing Family A Member 1 / PLUNC Antibody is a Rabbit Polyclonal against BPI Fold-Containing Family A Member 1 / PLUNC.

Target:	BPI Fold-Containing Family A Member 1 / PLUNC (BPIFA1)
Clonality:	Polyclonal
Reactivity:	Human
Tested Applications:	WB, IHC, IF/ICC
Host:	Rabbit
Recommended dilutions:	WB: 0.01-2 µg/ml, IHC: 5-20 µg/ml, IF/ICC: 5-20 µg/ml. Optimal dilutions/concentrations should be determined by the end user.
Conjugation:	Unconjugated
Immunogen:	abx167974 - Recombinant PLUNC (Gln20-Val256) expressed in E. coli
Form:	Liquid
Purification:	Purified by antigen-specific affinity chromatography, followed by Protein A affinity chromatography.
Storage:	Aliquot and store at -20°C. Avoid repeated freeze/thaw cycles.
UniProt Primary AC:	Q9NP55 (UniProt , ExPASy)
String:	9606.ENSP00000346251
Buffer:	0.01 M PBS, pH 7.4, containing 0.05% Proclin-300, 50% glycerol.

Datasheet

Version: 5.0.0

Revision date: 12 Jul 2025



Note:

THIS PRODUCT IS FOR RESEARCH USE ONLY. NOT FOR USE IN DIAGNOSTIC, THERAPEUTIC OR COSMETIC PROCEDURES. NOT FOR HUMAN OR ANIMAL CONSUMPTION.

For Reference Only