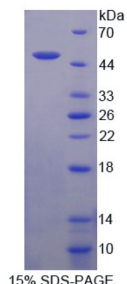


Cow Peptidase Inhibitor 16 (PI16) Protein

Catalogue No.: abx168005



SDS-PAGE analysis of Peptidase Inhibitor 16 Protein.

Peptidase Inhibitor 16 Protein is a recombinant Cow protein expressed in *E. coli*.

Target: Peptidase Inhibitor 16 (PI16)

Origin: Cow

Expression: Recombinant

Tested Applications: WB, SDS-PAGE

Host: *E. coli*

Conjugation: Unconjugated

Form: Lyophilized

Purity: > 90%

Reconstitution: To keep the original salt concentration, we recommend reconstituting to the original concentration prior to lyophilization (see Concentration) in ddH₂O. If a lower concentration is required, dilute in PBS, pH 7.4. If a higher concentration is required, the product can be reconstituted directly in PBS, pH 7.4, though please note that this will change the overall salt concentration. The stock concentration should be between 0.1-1.0 mg/ml. Do not vortex.

Storage: Store at 2-8 °C for up to one month. Store at -80 °C for up to one year. Avoid repeated freeze/thaw cycles.

UniProt Primary AC: Q58D34 ([UniProt](#), [ExPASy](#))

KEGG: bta:507058

String: [9913.ENSBTAP00000002703](https://string-db.org/cgi/show.do?query=Q58D34&organism=bta)

Datasheet

Version: 2.0.0

Revision date: 29 Jun 2025



Molecular Weight: Calculated MW: 48.4 kDa

Sequence Fragment: Leu28-Pro442

Tag: N-terminal His tag

Buffer: Prior to lyophilization: PBS, pH 7.4, containing 0.01% Sarcosyl, 1 mM DTT, 5% Trehalose and Proclin-300.

Activity: Not tested

Concentration: Prior to lyophilization: 200 µg/ml

Note: THIS PRODUCT IS FOR RESEARCH USE ONLY. NOT FOR USE IN DIAGNOSTIC, THERAPEUTIC OR COSMETIC PROCEDURES. NOT FOR HUMAN OR ANIMAL CONSUMPTION.

For Reference Only