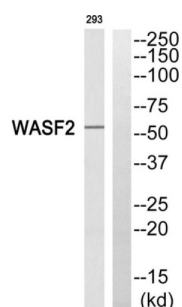
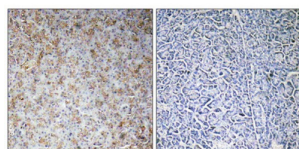


Wiskott Aldrich Syndrome Protein Family Member 2 (WASF2) Antibody

Catalogue No.: abx015005



Western blot analysis of extracts from 293 cells, using WASF2 antibody.



Immunohistochemistry analysis of paraffin-embedded human pancreas tissue, using WASF2 antibody.

Rabbit polyclonal antibody against WASF2 protein. Immunogen region is Internal.

Target:	Wiskott Aldrich Syndrome Protein Family Member 2 (WASF2)
Clonality:	Polyclonal
Reactivity:	Human, Mouse, Rat
Tested Applications:	ELISA, WB, IHC
Host:	Rabbit
Recommended dilutions:	WB: 1/500 - 1/3000, IHC: 1/50 - 1/100, ELISA: 1/1000. Optimal dilutions/concentrations should be determined by the end user.
Conjugation:	Unconjugated
Immunogen:	The antiserum was produced against synthesized peptide derived from internal of human WASF2.
Isotype:	IgG
Form:	Liquid
Purification:	Purified from rabbit antiserum by affinity chromatography using epitope-specific immunogen.

Datasheet

Version: 2.0.0

Revision date: 27 Aug 2025



Storage:	Aliquot and store at -20°C. Avoid repeated freeze/thaw cycles.
UniProt Primary AC:	Q9Y6W5 (UniProt , ExPASy)
String:	9606.ENSP00000483313
Sequence:	CKEKMLQDTKDIMKE
Buffer:	PBS (without Mg^{2+} and Ca^{2+}), pH 7.4, 150 mM NaCl, 0.02% sodium azide, 50% glycerol.
Concentration:	1 mg/ml
Note:	THIS PRODUCT IS FOR RESEARCH USE ONLY. NOT FOR USE IN DIAGNOSTIC, THERAPEUTIC OR COSMETIC PROCEDURES. NOT FOR HUMAN OR ANIMAL CONSUMPTION.

For Reference Only