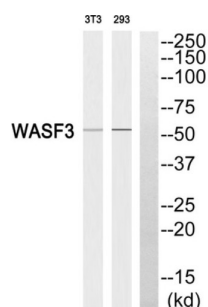
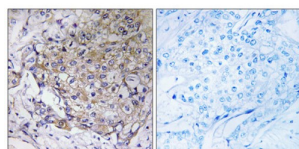


WAS Protein Family Member 3 (WASF3) Antibody

Catalogue No.: abx015006



Western blot analysis of extracts from 3T3 cells and 293 cells, using WASF3 antibody.



Immunohistochemistry analysis of paraffin-embedded human breast carcinoma tissue, using WASF3 antibody.

Rabbit polyclonal antibody against WASF3 protein. Immunogen region is Internal.

Target: WAS Protein Family Member 3 (WASF3)

Clonality: Polyclonal

Reactivity: Human, Mouse

Tested Applications: ELISA, WB, IHC

Host: Rabbit

Recommended dilutions: WB: 1/500 - 1/3000, IHC: 1/50 - 1/100, ELISA: 1/10000. Optimal dilutions/concentrations should be determined by the end user.

Conjugation: Unconjugated

Immunogen: The antiserum was produced against synthesized peptide derived from internal of human WASF3.

Isotype: IgG

Form: Liquid

Purification: Purified from rabbit antiserum by affinity chromatography using epitope-specific immunogen.

Datasheet

Version: 4.0.0

Revision date: 27 Aug 2025



| | |
|----------------------------|--|
| Storage: | Aliquot and store at -20°C. Avoid repeated freeze/thaw cycles. |
| UniProt Primary AC: | Q9UPY6 (UniProt , ExPASy) |
| String: | 9606.ENSP00000335055 |
| Sequence: | CKEKRRQKEQKRID |
| Buffer: | PBS (without Mg ²⁺ and Ca ²⁺), pH 7.4, 150 mM NaCl, 0.02% sodium azide, 50% glycerol. |
| Concentration: | 1 mg/ml |
| Note: | THIS PRODUCT IS FOR RESEARCH USE ONLY. NOT FOR USE IN DIAGNOSTIC, THERAPEUTIC OR COSMETIC PROCEDURES. NOT FOR HUMAN OR ANIMAL CONSUMPTION. |

For Reference Only