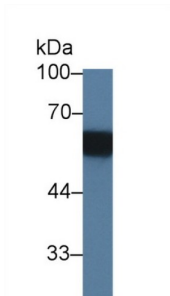
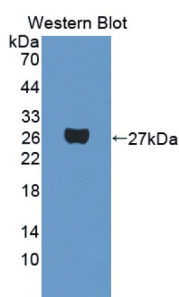


Phosphoprotein Associated With Glycosphingolipid Microdomains 1 (PAG1) Antibody

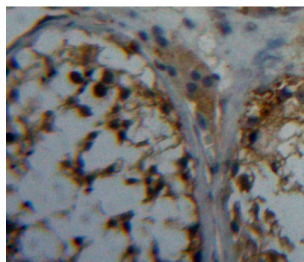
Catalogue No.: abx130038



Western blot analysis of Rat Serum, using Rat PAG1 Antibody (3 µg/ml) and HRP-conjugated Goat Anti-Rabbit antibody (abx400043, 0.2 µg/ml).



Western blot analysis of the recombinant protein.



IHC-P analysis of testis tissue, with DAB staining.

Phosphoprotein Associated With Glycosphingolipid Microdomains 1 Antibody is a Rabbit Polyclonal against Phosphoprotein Associated With Glycosphingolipid Microdomains 1.

Target: Phosphoprotein Associated With Glycosphingolipid Microdomains 1 (PAG1)

Clonality: Polyclonal

Reactivity: Rat

Tested Applications: WB, IHC, IF/ICC

Host: Rabbit

Recommended dilutions: WB: 0.01-2 µg/ml, IHC: 5-20 µg/ml, IF/ICC: 5-20 µg/ml. Optimal dilutions/concentrations should be determined by the end user.

Datasheet

Version: 2.0.0

Revision date: 17 Jul 2025



Conjugation:	Unconjugated
Immunogen:	PAG1 (Ile138-Phe357)
Form:	Liquid
Purification:	Purified by antigen-specific affinity chromatography, followed by Protein A affinity chromatography.
Storage:	Aliquot and store at -20°C. Avoid repeated freeze/thaw cycles.
Buffer:	0.01 M PBS, pH 7.4, containing 0.05% Proclin-300, 50% glycerol.
Note:	THIS PRODUCT IS FOR RESEARCH USE ONLY. NOT FOR USE IN DIAGNOSTIC, THERAPEUTIC OR COSMETIC PROCEDURES. NOT FOR HUMAN OR ANIMAL CONSUMPTION.

For Reference Only