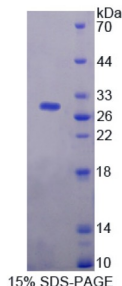


Mouse Phosphoprotein Associated With Glycosphingolipid Microdomains 1 (PAG1) Protein

Catalogue No.: abx167338



SDS-PAGE analysis of Phosphoprotein Associated With Glycosphingolipid Microdomains 1 Protein.

Phosphoprotein Associated With Glycosphingolipid Microdomains 1 Protein is a recombinant Mouse protein expressed in E. coli.

Target: Phosphoprotein Associated With Glycosphingolipid Microdomains 1 (PAG1)

Origin: Mouse

Expression: Recombinant

Tested Applications: WB, SDS-PAGE

Host: E. coli

Conjugation: Unconjugated

Form: Lyophilized

Activity: Not tested

Purity: > 95%

Reconstitution: To keep the original salt concentration, we recommend reconstituting to the original concentration prior to lyophilization (see Concentration) in ddH₂O. If a lower concentration is required, dilute in PBS, pH 7.4. If a higher concentration is required, the product can be reconstituted directly in PBS, pH 7.4, though please note that this will change the overall salt concentration. The stock concentration should be between 0.1-1.0 mg/ml. Do not vortex.

Storage: Store at 2-8°C for up to one month. For long-term storage, store at -80°C. Avoid repeated freeze/thaw cycles.

UniProt Primary AC: Q3U1F9 ([UniProt](#), [ExPASy](#))

Datasheet

Version: 3.0.0

Revision date: 06 Oct 2025



KEGG: mmu:94212

String: [10090.ENSMUSP00000124529](#)

Molecular Weight: Calculated MW: 28.7 kDa

Sequence Fragment: Gly160-Gln390

Tag: N-terminal His tag

Buffer: Prior to lyophilization: PBS, pH 7.4, containing 0.01% Sarcosyl, 1 mM DTT, 5% Trehalose and Proclin-300.

Concentration: Prior to lyophilization: 200 µg/ml

Note: THIS PRODUCT IS FOR RESEARCH USE ONLY. NOT FOR USE IN DIAGNOSTIC, THERAPEUTIC OR COSMETIC PROCEDURES. NOT FOR HUMAN OR ANIMAL CONSUMPTION.

For Reference Only