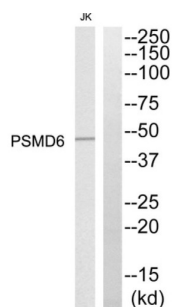


26S Proteasome Non-ATPase Regulatory Subunit 6 (PSMD6) Antibody

Catalogue No.: abx015036



Western blot analysis of extracts from Jurkat cells, using PSMD6 antibody.

Rabbit polyclonal antibody against PSMD6 protein. Immunogen region is Internal. This gene encodes a member of the protease subunit S10 family. The encoded protein is a subunit of the 26S proteasome which colocalizes with DNA damage foci and is involved in the ATP-dependent degradation of ubiquitinated proteins.

Target:	26S Proteasome Non-ATPase Regulatory Subunit 6 (PSMD6)
Clonality:	Polyclonal
Reactivity:	Human, Mouse, Rat
Tested Applications:	ELISA, WB
Host:	Rabbit
Recommended dilutions:	WB: 1/500 - 1/3000, ELISA: 1/40000. Optimal dilutions/concentrations should be determined by the end user.
Conjugation:	Unconjugated
Immunogen:	The antiserum was produced against synthesized peptide derived from internal of human PSMD6.
Isotype:	IgG
Form:	Liquid
Purification:	Purified from rabbit antiserum by affinity chromatography using epitope-specific immunogen.
Storage:	Aliquot and store at -20°C. Avoid repeated freeze/thaw cycles.
UniProt Primary AC:	Q15008 (UniProt , ExPASy)
Gene Symbol:	PSMD6

Datasheet

Version: 4.0.0

Revision date: 13 Aug 2025



GeneID: [9861](#)

OMIM: [617857](#)

NCBI Accession: NP_001258708.1, NM_001271779.1, NP_001258709.1, NM_001271780.1, NP_001258710.1, NM_001271781.1, NP_055629.1, NM_014814.2

HGNC: 9564

KEGG: hsa:9861

Ensembl: ENSG00000163636

Buffer: PBS (without Mg^{2+} and Ca^{2+}), pH 7.4, 150 mM NaCl, 0.02% sodium azide, 50% glycerol.

Concentration: 1 mg/ml

Note: THIS PRODUCT IS FOR RESEARCH USE ONLY. NOT FOR USE IN DIAGNOSTIC, THERAPEUTIC OR COSMETIC PROCEDURES. NOT FOR HUMAN OR ANIMAL CONSUMPTION.

For Reference Only