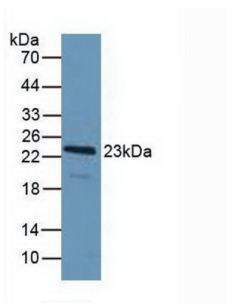
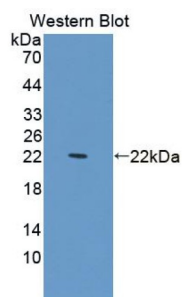


Programmed Cell Death Protein 6 (PDCD6) Antibody

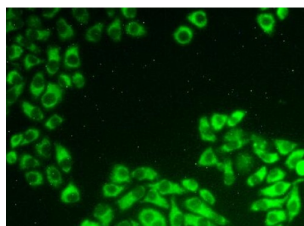
Catalogue No.: abx129280



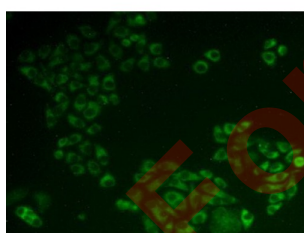
Western blot analysis of Human HeLa cells.



Western blot analysis of recombinant Human PDCD6.



IHC-P analysis of HeLa cells, with FITC staining.



IHC-P analysis of Human HeLa cells, with FITC staining.

Programmed Cell Death Protein 6 Antibody is a Rabbit Polyclonal against Programmed Cell Death Protein 6.

Target: Programmed Cell Death Protein 6 (PDCD6)

Clonality: Polyclonal

Reactivity: Human

Datasheet

Version: 3.0.0
Revision date: 13 Aug 2025



Tested Applications:	WB, IHC, IF/ICC
Host:	Rabbit
Recommended dilutions:	WB: 0.01-2 µg/ml, IHC: 5-20 µg/ml, IF/ICC: 5-20 µg/ml. Optimal dilutions/concentrations should be determined by the end user.
Conjugation:	Unconjugated
Immunogen:	PDCD6 (Phe32-Val191)
Form:	Liquid
Purification:	Purified by antigen-specific affinity chromatography, followed by Protein A affinity chromatography.
Storage:	Aliquot and store at -20°C. Avoid repeated freeze/thaw cycles.
UniProt Primary AC:	O75340 (UniProt , ExPASy)
KEGG:	hsa:10016
String:	9606.ENSP00000264933
Buffer:	0.01 M PBS, pH 7.4, containing 0.05% Proclin-300, 50% glycerol.
Note:	THIS PRODUCT IS FOR RESEARCH USE ONLY. NOT FOR USE IN DIAGNOSTIC, THERAPEUTIC OR COSMETIC PROCEDURES. NOT FOR HUMAN OR ANIMAL CONSUMPTION.