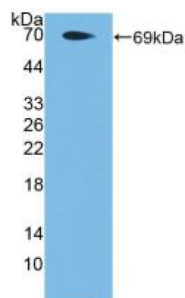
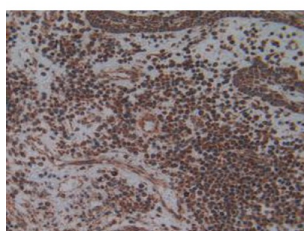


Proteinase-Activated Receptor 4 (F2RL3) Antibody

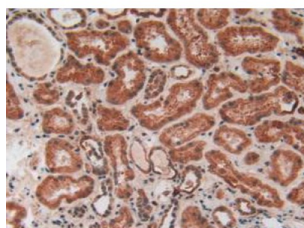
Catalogue No.: abx128911



Western blot analysis of recombinant Human F2RL3.



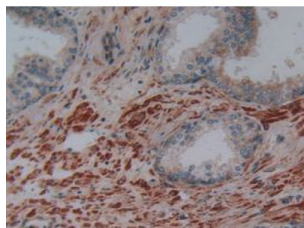
IHC-P analysis of Human Lung Cancer Tissue, with DAB staining.



IHC-P analysis of Human Kidney Tissue, with DAB staining.



IHC-P analysis of Human Stomach Tissue, with DAB staining.



IHC-P analysis of Human Breast Cancer Tissue, with DAB staining.

Proteinase-Activated Receptor 4 Antibody is a Rabbit Polyclonal against Proteinase-Activated Receptor 4.

Target:	Proteinase-Activated Receptor 4 (F2RL3)
Research Area:	Hematology
Clonality:	Polyclonal
Reactivity:	Human
Tested Applications:	WB, IHC, IF/ICC
Host:	Rabbit
Recommended dilutions:	WB: 1-5 µg/ml, IHC: 5-20 µg/ml, IF/ICC: 5-20 µg/ml. Optimal dilutions/concentrations should be determined by the end user.
Conjugation:	Unconjugated
Immunogen:	PAR4 (Gly48-Gln385)
Form:	Liquid
Purification:	Purified by antigen-specific affinity chromatography, followed by Protein A affinity chromatography.
Storage:	Aliquot and store at -20°C. Avoid repeated freeze/thaw cycles.
UniProt Primary AC:	Q96RI0 (UniProt , ExPASy)
Gene Symbol:	F2RL3
GeneID:	9002
KEGG:	hsa:9002
String:	9606.ENSP00000248076
Buffer:	0.01 M PBS, pH 7.4, containing 0.05% Proclin-300, 50% glycerol.
Note:	THIS PRODUCT IS FOR RESEARCH USE ONLY. NOT FOR USE IN DIAGNOSTIC, THERAPEUTIC OR COSMETIC PROCEDURES. NOT FOR HUMAN OR ANIMAL CONSUMPTION.