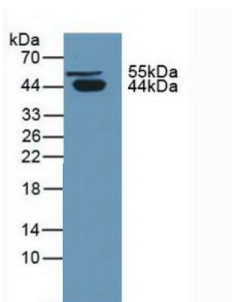
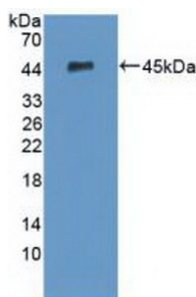


Protein C Inhibitor (SERPINA5) Antibody

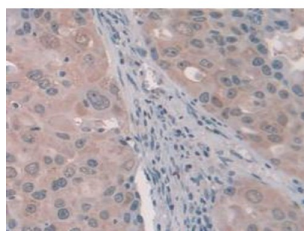
Catalogue No.: abx128225



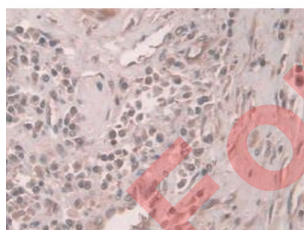
Western blot analysis of Human Urine.



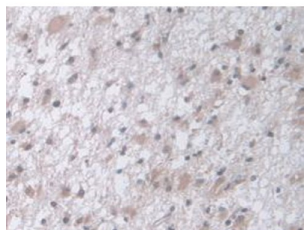
Western blot analysis of recombinant Human PCI.



IHC-P analysis of Human Breast Cancer Tissue, with DAB staining.



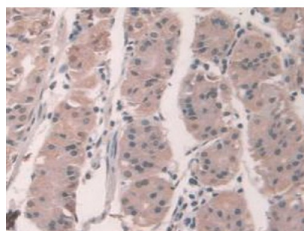
IHC-P analysis of Human Prostate Gland Cancer Tissue, with DAB staining.



IHC-P analysis of Human Glioma Tissue, with DAB staining.

Datasheet

Version: 5.0.0
Revision date: 19 Mar 2025



IHC-P analysis of Human Stomach Tissue, with DAB staining.

Protein C Inhibitor (SERPINA5) Antibody is a Rabbit Polyclonal against Protein C Inhibitor (SERPINA5).

Target:	Protein C Inhibitor (SERPINA5)
Clonality:	Polyclonal
Reactivity:	Human
Tested Applications:	WB, IHC, IF/ICC
Host:	Rabbit
Recommended dilutions:	WB: 1-5 µg/ml, IHC: 5-20 µg/ml, IF/ICC: 5-20 µg/ml. Optimal dilutions/concentrations should be determined by the end user.
Conjugation:	Unconjugated
Immunogen:	PCI (Ser43-Pro406)
Form:	Liquid
Purification:	Purified by antigen-specific affinity chromatography, followed by Protein A affinity chromatography.
Storage:	Aliquot and store at -20°C. Avoid repeated freeze/thaw cycles.
UniProt Primary AC:	P05154 (UniProt , ExPASy)
KEGG:	hsa:5104
String:	9606.ENSP00000333203
Buffer:	0.01 M PBS, pH 7.4, containing 0.05% Proclin-300, 50% glycerol.
Note:	THIS PRODUCT IS FOR RESEARCH USE ONLY. NOT FOR USE IN DIAGNOSTIC, THERAPEUTIC OR COSMETIC PROCEDURES. NOT FOR HUMAN OR ANIMAL CONSUMPTION.