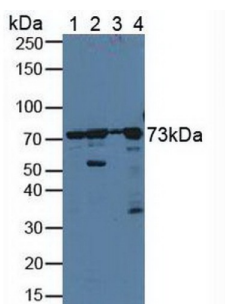
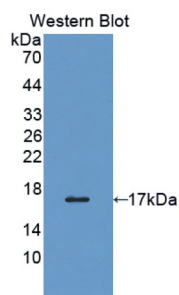


Protein Disulfide Isomerase A4 (PDIA4) Antibody

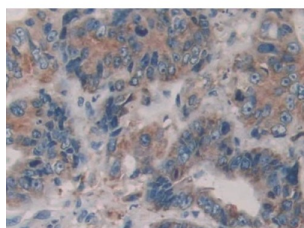
Catalogue No.: abx128208



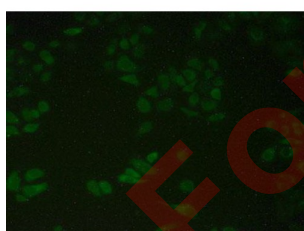
Western blot analysis of (1) Human HeLa cells, (2) Porcine Liver Tissue, (3) Porcine Brain Tissue and (4) Human A431 Cells.



Western blot analysis of recombinant Human PDIA4.



IHC-P analysis of Human Colorectal cancer Tissue, with DAB staining.



IHC-P analysis of Human HeLa cells, with FITC staining.

Protein Disulfide Isomerase A4 Antibody is a Rabbit Polyclonal against Protein Disulfide Isomerase A4.

Target: Protein Disulfide Isomerase A4 (PDIA4)

Clonality: Polyclonal

Reactivity: Human

Datasheet

Version: 7.0.0
Revision date: 13 Aug 2025



Tested Applications:	WB, IHC, IF/ICC
Host:	Rabbit
Recommended dilutions:	WB: 0.01-2 µg/ml, IHC: 5-20 µg/ml, IF/ICC: 5-20 µg/ml. Optimal dilutions/concentrations should be determined by the end user.
Conjugation:	Unconjugated
Immunogen:	PDIA4 (Phe505-Thr636)
Form:	Liquid
Purification:	Purified by antigen-specific affinity chromatography, followed by Protein A affinity chromatography.
Storage:	Aliquot and store at -20°C. Avoid repeated freeze/thaw cycles.
UniProt Primary AC:	P13667 (UniProt , ExPASy)
KEGG:	hsa:9601
String:	9606.ENSP00000286091
Buffer:	0.01 M PBS, pH 7.4, containing 0.05% Proclin-300, 50% glycerol.
Note:	THIS PRODUCT IS FOR RESEARCH USE ONLY. NOT FOR USE IN DIAGNOSTIC, THERAPEUTIC OR COSMETIC PROCEDURES. NOT FOR HUMAN OR ANIMAL CONSUMPTION.