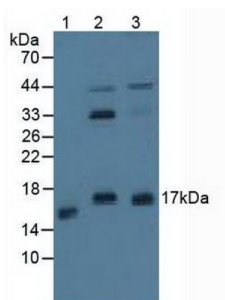
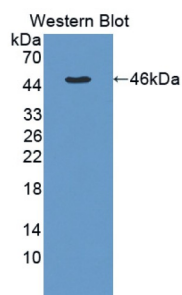


Protein Phosphatase 3, Regulatory Subunit 1 (PPP3R1) Antibody

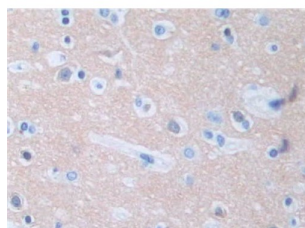
Catalogue No.: abx129114



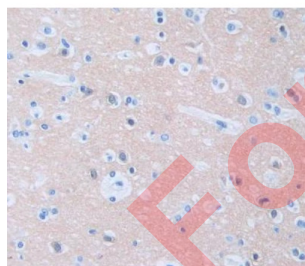
Western blot analysis of (1) Porcine Stomach Tissue, (2) Human HeLa cells and (3) Human A431 Cells.



Western blot analysis of recombinant Human PPP3R1.



IHC-P analysis of Human Cerebrum Tissue, with DAB staining.



IHC-P analysis of Kidney tissue, with DAB staining.

Protein Phosphatase 3, Regulatory Subunit 1 Antibody is a Rabbit Polyclonal against Protein Phosphatase 3, Regulatory Subunit 1.

Target: Protein Phosphatase 3, Regulatory Subunit 1 (PPP3R1)

Clonality: Polyclonal

Datasheet

Version: 4.0.0

Revision date: 11 Sep 2025



Reactivity: Human

Tested Applications: WB, IHC, IF/ICC

Host: Rabbit

Recommended dilutions: WB: 0.01-2 µg/ml, IHC: 5-20 µg/ml, IF/ICC: 5-20 µg/ml. Optimal dilutions/concentrations should be determined by the end user.

Conjugation: Unconjugated

Immunogen: PPP3R1 (Gly2-Val170)

Form: Liquid

Purification: Purified by antigen-specific affinity chromatography, followed by Protein A affinity chromatography.

Storage: Aliquot and store at -20°C. Avoid repeated freeze/thaw cycles.

Buffer: 0.01 M PBS, pH 7.4, containing 0.05% Proclin-300, 50% glycerol.

Note: THIS PRODUCT IS FOR RESEARCH USE ONLY. NOT FOR USE IN DIAGNOSTIC, THERAPEUTIC OR COSMETIC PROCEDURES. NOT FOR HUMAN OR ANIMAL CONSUMPTION.