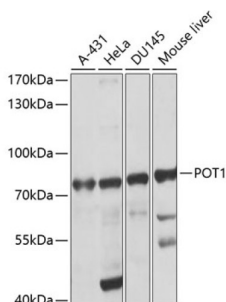


Protection of Telomeres Protein 1 (POT1) Antibody

Catalogue No.: abx001265



Western blot analysis of various lysates using POT1 Antibody at 1/1000 dilution. Secondary antibody: HRP-conjugated Goat anti-Rabbit IgG (H+L) at 1/10000 dilution. Lysates/proteins: 25 µg per lane. Blocking buffer: 3% nonfat dry milk in TBST. Exposure time: 30s.

POT1 Antibody is a Rabbit Polyclonal antibody against POT1. Protection of telomeres 1 (POT1) is a conserved protein that binds the G-rich strand of its own telomeric repeat sequence, with a role in protecting chromosome ends. It's housekeeping gene that is required to ensure the integrity of chromosome ends in all cells. It's a component of the telomerase ribonucleoprotein (RNP) complex that is essential for the replication of chromosome termini. It consists the TRF1 complex that is involved in the regulation of telomere length by cis-inhibition of telomerase.

Target:	Protection of Telomeres Protein 1 (POT1)
Clonality:	Polyclonal
Reactivity:	Human, Mouse
Tested Applications:	ELISA, WB
Host:	Rabbit
Recommended dilutions:	ELISA: 1 µg/ml, WB: 1/200 - 1/2000. Optimal dilutions/concentrations should be determined by the end user.
Conjugation:	Unconjugated
Immunogen:	Recombinant fusion protein containing a sequence corresponding to amino acids 497-634 of human POT1.
Isotype:	IgG
Form:	Liquid
Purification:	Purified by affinity chromatography.
Storage:	Aliquot and store at -20°C. Avoid repeated freeze/thaw cycles.
UniProt Primary AC:	Q9NUX5 (UniProt , ExPASy)

Datasheet

Version: 4.0.0

Revision date: 05 Mar 2025



Gene Symbol: POT1

GeneID: [25913](#)

NCBI Accession: NP_056265.2

String: [9606.ENSP00000350249](#)

Molecular Weight: Calculated MW: 71 kDa
Observed MW: 75 kDa

Buffer: PBS, pH 7.3, containing 0.02% sodium azide, 50% glycerol.

Concentration: 3.95 mg/ml

Note: THIS PRODUCT IS FOR RESEARCH USE ONLY. NOT FOR USE IN DIAGNOSTIC, THERAPEUTIC OR COSMETIC PROCEDURES. NOT FOR HUMAN OR ANIMAL CONSUMPTION.

For Reference Only