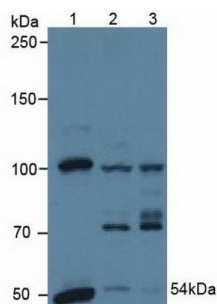
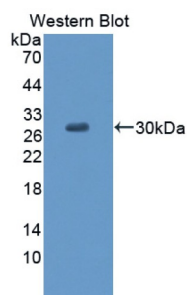


## Pyruvate Dehydrogenase Complex Component X (PDHX) Antibody

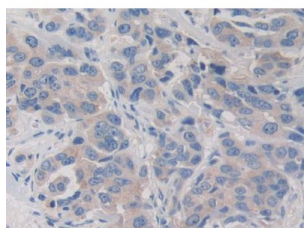
Catalogue No.: abx129031



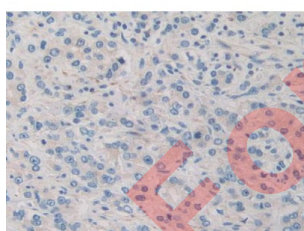
Western blot analysis of (1) Human A431 Cells, (2) Human HeLa cells and (3) Porcine Heart Tissue.



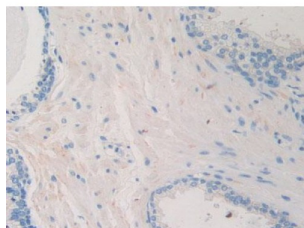
Western blot analysis of recombinant Human PDHX.



IHC-P analysis of Human Breast Cancer Tissue, with DAB staining.



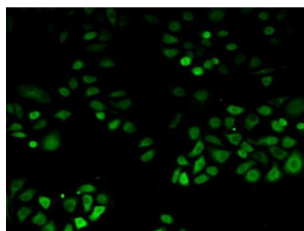
IHC-P analysis of Human Prostate Gland Cancer Tissue, with DAB staining.



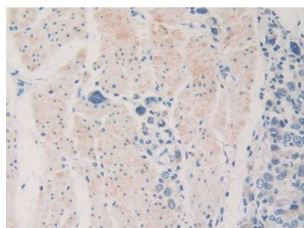
IHC-P analysis of Human Prostate Gland Tissue, with DAB staining.

# Datasheet

Version: 4.0.0  
Revision date: 28 Sep 2025



IHC-P analysis of Human Hela Cells, with FITC staining.



IHC-P analysis of Human Stomach Cancer Tissue, with DAB staining.

Pyruvate Dehydrogenase Complex Component X Antibody is a Rabbit Polyclonal against Pyruvate Dehydrogenase Complex Component X.

<b>Target:</b>	Pyruvate Dehydrogenase Complex Component X (PDHX)
<b>Clonality:</b>	Polyclonal
<b>Reactivity:</b>	Human
<b>Tested Applications:</b>	WB, IHC, IF/ICC
<b>Host:</b>	Rabbit
<b>Recommended dilutions:</b>	WB: 0.01-2 µg/ml, IHC: 5-20 µg/ml, IF/ICC: 5-20 µg/ml. Optimal dilutions/concentrations should be determined by the end user.
<b>Conjugation:</b>	Unconjugated
<b>Immunogen:</b>	PDHX (Val220-Thr468)
<b>Form:</b>	Liquid
<b>Purification:</b>	Purified by antigen-specific affinity chromatography, followed by Protein A affinity chromatography.
<b>Storage:</b>	Aliquot and store at -20°C. Avoid repeated freeze/thaw cycles.
<b>Buffer:</b>	0.01 M PBS, pH 7.4, containing 0.05% Proclin-300, 50% glycerol.

# Datasheet

Version: 4.0.0

Revision date: 28 Sep 2025



**Note:**

THIS PRODUCT IS FOR RESEARCH USE ONLY. NOT FOR USE IN DIAGNOSTIC, THERAPEUTIC OR COSMETIC PROCEDURES. NOT FOR HUMAN OR ANIMAL CONSUMPTION.

For Reference Only