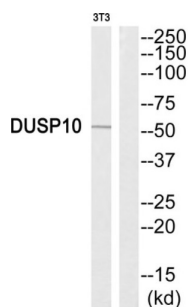


## Dual Specificity Phosphatase 10 (DUSP10) Antibody

Catalogue No.: abx015076



Western blot analysis of extracts from NIH-3T3 cells, using DUSP10 antibody.

Rabbit polyclonal antibody against DUSP10 protein. Immunogen region is C-terminal.

<b>Target:</b>	Dual Specificity Phosphatase 10 (DUSP10)
<b>Clonality:</b>	Polyclonal
<b>Reactivity:</b>	Human, Mouse, Rat
<b>Tested Applications:</b>	ELISA, WB
<b>Host:</b>	Rabbit
<b>Recommended dilutions:</b>	ELISA: 1/40000, WB: 1/500 - 1/3000. Optimal dilutions/concentrations should be determined by the end user.
<b>Conjugation:</b>	Unconjugated
<b>Immunogen:</b>	The antiserum was produced against synthesized peptide derived from the C-terminal region of human DUSP10.
<b>Isotype:</b>	IgG
<b>Form:</b>	Liquid
<b>Purification:</b>	Purified from rabbit antiserum by affinity chromatography using epitope-specific immunogen.
<b>Storage:</b>	Aliquot and store at -20°C. Avoid repeated freeze/thaw cycles.
<b>UniProt Primary AC:</b>	Q9Y6W6 ( <a href="#">UniProt</a> , <a href="#">ExPASy</a> )
<b>Gene Symbol:</b>	DUSP10
<b>GeneID:</b>	<a href="#">11221</a>

# Datasheet

Version: 4.0.0  
Revision date: 23 Jun 2025



<b>OMIM:</b>	<a href="#">608867</a>
<b>HGNC:</b>	3065
<b>Ensembl:</b>	ENSG00000143507
<b>String:</b>	<a href="#">9606.ENSP00000355866</a>
<b>Buffer:</b>	PBS (without Mg <sup>2+</sup> and Ca <sup>2+</sup> ), pH 7.4, 150 mM NaCl, 0.02% sodium azide, 50% glycerol.
<b>Specificity:</b>	Detects endogenous levels of total DUSP10 protein.
<b>Concentration:</b>	1 mg/ml
<b>Note:</b>	THIS PRODUCT IS FOR RESEARCH USE ONLY. NOT FOR USE IN DIAGNOSTIC, THERAPEUTIC OR COSMETIC PROCEDURES. NOT FOR HUMAN OR ANIMAL CONSUMPTION.

For Reference Only