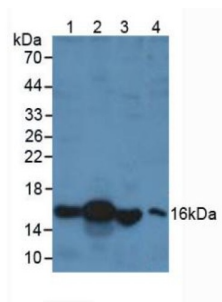
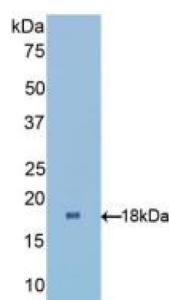


Retinol-Binding Protein 1 (RBP1) Antibody

Catalogue No.: abx128517



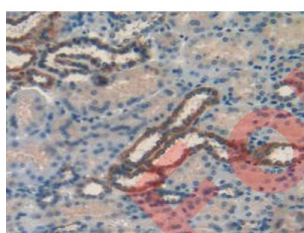
Western blot analysis of (1) Porcine Liver Tissue, (2) Human Liver Tissue, (3) Rat Testis Tissue and (4) Human 293T Cells.



Western blot analysis of recombinant Human RBP1.



IHC-P analysis of Human Kidney Tissue, with DAB staining.



IHC-P analysis of Human Kidney Tissue, with DAB staining.

Retinol-Binding Protein 1 Antibody is a Rabbit Polyclonal against Retinol-Binding Protein 1.

Target: Retinol-Binding Protein 1 (RBP1)

Clonality: Polyclonal

Reactivity: Human

Datasheet

Version: 3.0.0
Revision date: 05 Sep 2025



Tested Applications:	WB, IHC, IF/ICC
Host:	Rabbit
Recommended dilutions:	WB: 0.01-2 µg/ml, IHC: 5-20 µg/ml, IF/ICC: 5-20 µg/ml. Optimal dilutions/concentrations should be determined by the end user.
Conjugation:	Unconjugated
Immunogen:	RBP1 (Pro2-Gln135)
Form:	Liquid
Purification:	Purified by antigen-specific affinity chromatography, followed by Protein A affinity chromatography.
Storage:	Aliquot and store at -20°C. Avoid repeated freeze/thaw cycles.
UniProt Primary AC:	P09455 (UniProt , ExPASy)
Gene Symbol:	RBP1
GeneID:	5947
OMIM:	180260
NCBI Accession:	NP_001124464.1, NM_001130992.1
HGNC:	9919
KEGG:	hsa:5947
Ensembl:	ENSG00000114115
String:	9606.ENSP00000232219
Buffer:	0.01 M PBS, pH 7.4, containing 0.05% Proclin-300, 50% glycerol.
Note:	THIS PRODUCT IS FOR RESEARCH USE ONLY. NOT FOR USE IN DIAGNOSTIC, THERAPEUTIC OR COSMETIC PROCEDURES. NOT FOR HUMAN OR ANIMAL CONSUMPTION.