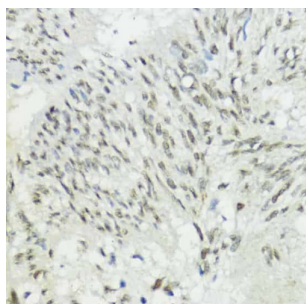


Zinc Finger E-Box-Binding Homeobox 1 (ZEB1) Antibody

Catalogue No.: abx001268



Immunohistochemistry of paraffin-embedded Human gastric cancer using ZEB1 Antibody (1/200 dilution, 40x lens).

ZEB1 Antibody is a Rabbit Polyclonal antibody against ZEB1. ZEB1 (zinc-finger-enhancer binding protein 1), which is a member of the Zincfinger-Homeobox (ZFH)-family of repressors, acts as a transcriptional repressor that inhibits interleukin-2 (IL-2) gene expression. Depending on the quantity of cDNA and on the cell type, ZEB1 can enhance or repress the promoter activity of the ATP1A1 gene. Represses E-cadherin promoter and induces an epithelial-mesenchymal transition (EMT) by recruiting SMARCA4/BRG1. Represses BCL6 transcription in the presence of the corepressor CTBP1. Positively regulates neuronal differentiation. This is a rabbit polyclonal antibody raised against part of the full length of ZEB1 of human.

Target:	Zinc Finger E-Box-Binding Homeobox 1 (ZEB1)
Clonality:	Polyclonal
Reactivity:	Human, Mouse, Rat
Tested Applications:	IHC
Host:	Rabbit
Recommended dilutions:	IHC-P: 1/50 - 1/200. Not tested in IHC-F. Optimal dilutions/concentrations should be determined by the end user.
Conjugation:	Unconjugated
Immunogen:	Recombinant protein corresponding to human ZEB1
Isotype:	IgG
Form:	Liquid
Purification:	Purified by affinity chromatography.
Storage:	Aliquot and store at -20°C. Avoid repeated freeze/thaw cycles.
UniProt Primary AC:	P37275 (UniProt , ExPASy)

Datasheet

Version: 5.0.0
Revision date: 22 Aug 2025



Gene Symbol: ZEB1

GeneID: [6935](#)

NCBI Accession: NP_110378.3

KEGG: hsa:6935

String: [9606.ENSP00000354487](#)

Buffer: PBS, pH 7.3, containing 0.02% sodium azide, 50% glycerol.

Concentration: 1 mg/ml

Note: THIS PRODUCT IS FOR RESEARCH USE ONLY. NOT FOR USE IN DIAGNOSTIC, THERAPEUTIC OR COSMETIC PROCEDURES. NOT FOR HUMAN OR ANIMAL CONSUMPTION.

For Reference Only