

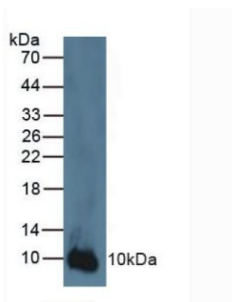
Datasheet

Version: 4.0.0

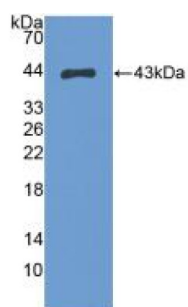
Revision date: 22 Dec 2025

S100 Calcium Binding Protein A2 (S100A2) Antibody

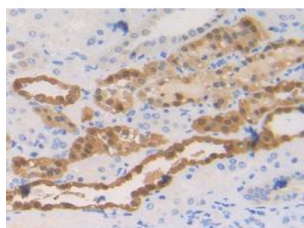
Catalogue No.: abx128827



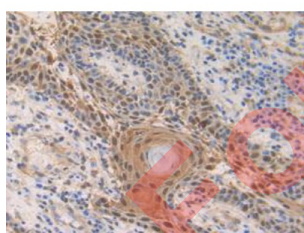
Western blot analysis of Human A431 Cells.



Western blot analysis of recombinant Human S100A2.



IHC-P analysis of Human Kidney Tissue, with DAB staining.



IHC-P analysis of Human Skin Cancer Tissue, with DAB staining.

S100A2 Antibody is a Rabbit Polyclonal against S100A2.

Target: S100 Calcium Binding Protein A2 (S100A2)

Clonality: Polyclonal

Reactivity: Human

Datasheet

Version: 4.0.0
Revision date: 22 Dec 2025



Tested Applications: WB, IHC, IF/ICC

Host: Rabbit

Recommended dilutions: WB: 0.01-5 µg/ml, IHC: 5-20 µg/ml, IF/ICC: 5-20 µg/ml. Optimal dilutions/concentrations should be determined by the end user.

Conjugation: Unconjugated

Immunogen: S100A2 (Met2-Pro98)

Form: Liquid

Purification: Purified by antigen-specific affinity chromatography, followed by Protein A affinity chromatography.

Storage: Aliquot and store at -20°C. Avoid repeated freeze/thaw cycles.

UniProt Primary AC: P54652 ([UniProt](#), [ExPASy](#))

KEGG: hsa:3306

String: [9606.ENSP00000378199](#)

Buffer: 0.01 M PBS, pH 7.4, containing 0.05% Proclin-300, 50% glycerol.

Note: THIS PRODUCT IS FOR RESEARCH USE ONLY. NOT FOR USE IN DIAGNOSTIC, THERAPEUTIC OR COSMETIC PROCEDURES. NOT FOR HUMAN OR ANIMAL CONSUMPTION.