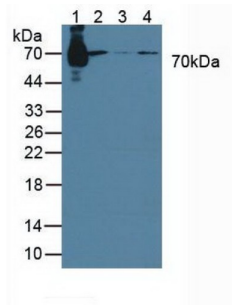
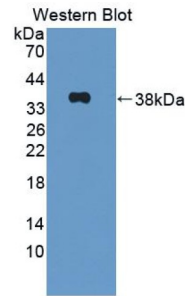


Signal Transducing Adaptor Molecule 1 (STAM1) Antibody

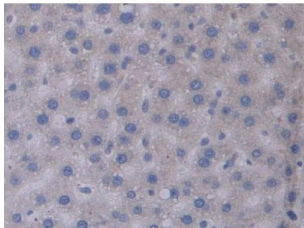
Catalogue No.:abx130346



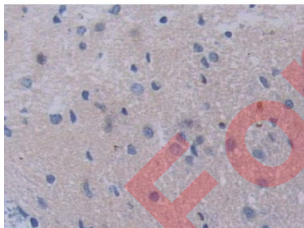
Western blot analysis of (1) Rat Serum, (2) Human Raji cells, (3) Human Jurkat cells and (4) Human K562 cells.



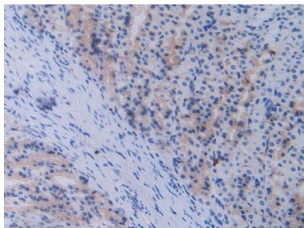
Western blot analysis of recombinant Rat STAM1.



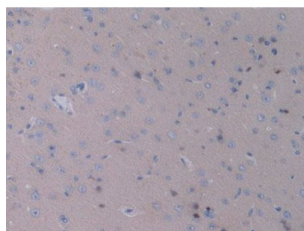
IHC-P analysis of Rat Liver Tissue, with DAB staining.



IHC-P analysis of Rat Spinal Marrow Tissue, with DAB staining.



IHC-P analysis of Rat Stomach Tissue, with DAB staining.



IHC-P analysis of Rat Brain Tissue, with DAB staining.

Signal Transducing Adaptor Molecule 1 Antibody is a Rabbit Polyclonal against Signal Transducing Adaptor Molecule 1.

Target:	Signal Transducing Adaptor Molecule 1 (STAM1)
Clonality:	Polyclonal
Reactivity:	Rat
Tested Applications:	WB, IHC, IF/ICC
Host:	Rabbit
Recommended dilutions:	WB: 0.01-2 µg/ml, IHC: 5-20 µg/ml, IF/ICC: 5-20 µg/ml. Optimal dilutions/concentrations should be determined by the end user.
Conjugation:	Unconjugated
Immunogen:	STAM1 (Pro199-Met466)
Form:	Liquid
Purification:	Purified by antigen-specific affinity chromatography, followed by Protein A affinity chromatography.
Storage:	Aliquot and store at -20°C. Avoid repeated freeze/thaw cycles.
Buffer:	0.01 M PBS, pH 7.4, containing 0.05% Proclin-300, 50% glycerol.
Note:	THIS PRODUCT IS FOR RESEARCH USE ONLY. NOT FOR USE IN DIAGNOSTIC, THERAPEUTIC OR COSMETIC PROCEDURES. NOT FOR HUMAN OR ANIMAL CONSUMPTION.