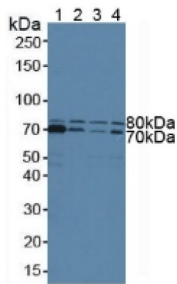
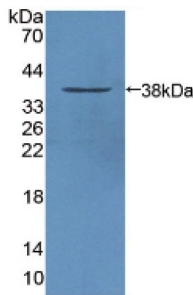


Signal Transducing Adaptor Molecule 1 (STAM1) Antibody

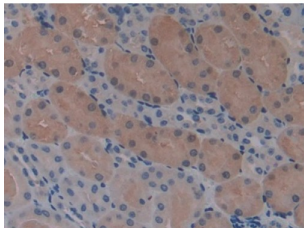
Catalogue No.:abx129679



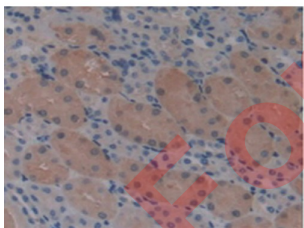
Western blot analysis of (1) Human HeLa cells, (2) Human Raji Cells, (3) Human Jurkat Cells and (4) Human K562 Cells.



Western blot analysis of recombinant Mouse STAM1.



IHC-P analysis of Mouse Kidney Tissue, with DAB staining.



IHC-P analysis of Mouse Kidney Tissue, with DAB staining.

Signal Transducing Adaptor Molecule 1 Antibody is a Rabbit Polyclonal against Signal Transducing Adaptor Molecule 1.

Target: Signal Transducing Adaptor Molecule 1 (STAM1)

Clonality: Polyclonal

Reactivity: Mouse

Datasheet

Version: 2.0.0
Revision date: 11 Aug 2025



Tested Applications: WB, IHC, IF/ICC

Host: Rabbit

Recommended dilutions: WB: 0.01-5 µg/ml, IHC: 5-20 µg/ml, IF/ICC: 5-20 µg/ml. Optimal dilutions/concentrations should be determined by the end user.

Conjugation: Unconjugated

Immunogen: STAM1 (Pro199-Met464)

Form: Liquid

Purification: Purified by antigen-specific affinity chromatography, followed by Protein A affinity chromatography.

Storage: Aliquot and store at -20°C. Avoid repeated freeze/thaw cycles.

Buffer: 0.01 M PBS, pH 7.4, containing 0.05% Proclin-300, 50% glycerol.

Note: THIS PRODUCT IS FOR RESEARCH USE ONLY. NOT FOR USE IN DIAGNOSTIC, THERAPEUTIC OR COSMETIC PROCEDURES. NOT FOR HUMAN OR ANIMAL CONSUMPTION.

For Reference Only