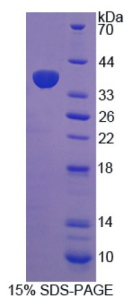


## Rat Signal Transducing Adaptor Protein 1 (STAP1) Protein

Catalogue No.: abx166139



SDS-PAGE analysis of Signal Transducing Adaptor Protein 1 Protein.

Signal Transducing Adaptor Protein 1 is a recombinant Rat protein expressed in E. coli.

**Target:** Signal Transducing Adaptor Protein 1 (STAP1)

**Origin:** Rat

**Expression:** Recombinant

**Tested Applications:** WB, SDS-PAGE

**Host:** E. coli

**Conjugation:** Unconjugated

**Form:** Lyophilized

**Activity:** Not tested

**Purity:** > 90%

**Reconstitution:** To keep the original salt concentration, we recommend reconstituting to the original concentration prior to lyophilization (see Concentration) in ddH<sub>2</sub>O. If a lower concentration is required, dilute in PBS, pH 7.4. If a higher concentration is required, the product can be reconstituted directly in PBS, pH 7.4, though please note that this will change the overall salt concentration. The stock concentration should be between 0.1-1.0 mg/ml. Do not vortex.

**Storage:** Store at 2-8°C for up to one month. For long-term storage, store at -80°C. Avoid repeated freeze/thaw cycles.

**Molecular Weight:** Calculated MW: 38.2 kDa

**Sequence Fragment:** Met1-Ala297

# Datasheet

Version: 2.0.0

Revision date: 10 Oct 2025



**Tag:** N-terminal His tag

**Buffer:** Prior to lyophilization: PBS, pH 7.4, containing 0.01% Sarcosyl, 1 mM DTT, 5% Trehalose and Proclin-300.

**Concentration:** Prior to lyophilization: 200 µg/ml

**Note:** THIS PRODUCT IS FOR RESEARCH USE ONLY. NOT FOR USE IN DIAGNOSTIC, THERAPEUTIC OR COSMETIC PROCEDURES. NOT FOR HUMAN OR ANIMAL CONSUMPTION.

For Reference Only