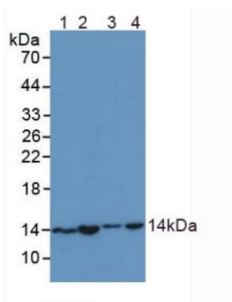
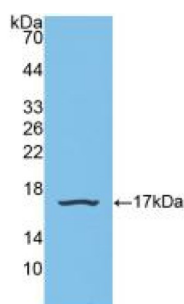


Small Nuclear Ribonucleoprotein Polypeptide D1 (SNRPD1) Antibody

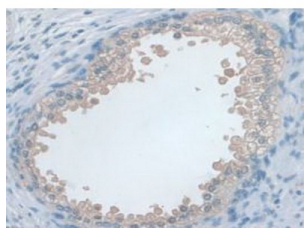
Catalogue No.: abx104958



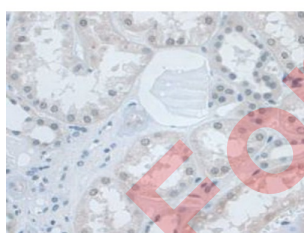
Western blot analysis of (1) Human HL-60 Cells, (2) Human Jurkat Cells, (3) Rat Testis Tissue and (4) Porcine Kidney Tissue.



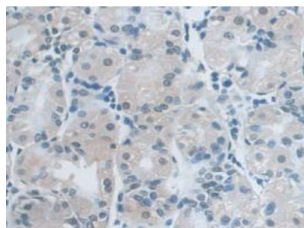
Western blot analysis of recombinant Human SNRPD1.



IHC-P analysis of Human Prostate Gland Tissue, with DAB staining.



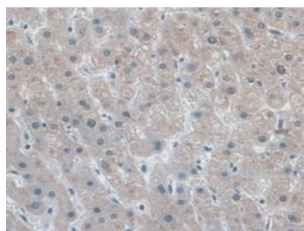
IHC-P analysis of Human Kidney Tissue, with DAB staining.



IHC-P analysis of Human Stomach Tissue, with DAB staining.

Datasheet

Version: 3.0.0
Revision date: 12 Sep 2025



IHC-P analysis of Human Liver Tissue, with DAB staining.

Small Nuclear Ribonucleoprotein Polypeptide D1 Antibody is a Rabbit Polyclonal against Small Nuclear Ribonucleoprotein Polypeptide D1.

Target:	Small Nuclear Ribonucleoprotein Polypeptide D1 (SNRPD1)
Clonality:	Polyclonal
Reactivity:	Human
Tested Applications:	WB, IHC, IF/ICC
Host:	Rabbit
Recommended dilutions:	WB: 1-5 µg/ml, IHC: 5-20 µg/ml, IF/ICC: 5-20 µg/ml. Optimal dilutions/concentrations should be determined by the end user.
Conjugation:	Unconjugated
Immunogen:	SNRPD1 (Met1-Arg119)
Form:	Liquid
Purification:	Purified by antigen-specific affinity chromatography, followed by Protein A affinity chromatography.
Storage:	Aliquot and store at -20°C. Avoid repeated freeze/thaw cycles.
Buffer:	0.01 M PBS, pH 7.4, containing 0.05% Proclin-300, 50% glycerol.
Note:	THIS PRODUCT IS FOR RESEARCH USE ONLY. NOT FOR USE IN DIAGNOSTIC, THERAPEUTIC OR COSMETIC PROCEDURES. NOT FOR HUMAN OR ANIMAL CONSUMPTION.