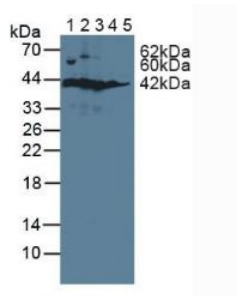
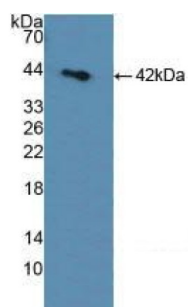


Sorbitol Dehydrogenase (SDH) Antibody

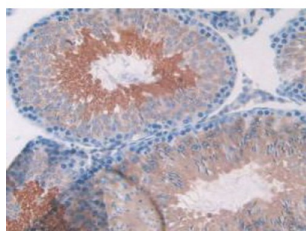
Catalogue No.: abx130119



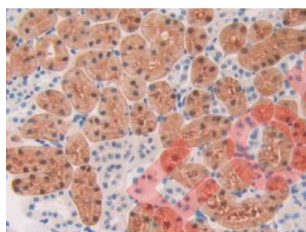
Western blot analysis of (1) Rat Serum, (2) Rat Liver Tissue, (3) Rat Kidney Tissue, (4) Rat Prostate Tissue and (5) Human HeLa cells.



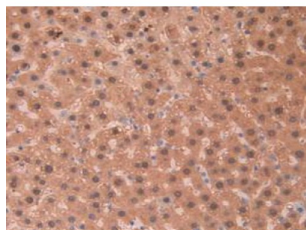
Western blot analysis of recombinant Rat SDH.



IHC-P analysis of Rat Testis Tissue, with DAB staining.



IHC-P analysis of Rat Kidney Tissue, with DAB staining.



IHC-P analysis of Rat Liver Tissue, with DAB staining.

Datasheet

Version: 3.0.0
Revision date: 12 Sep 2025



Sorbitol Dehydrogenase Antibody is a Rabbit Polyclonal against Sorbitol Dehydrogenase.

Target:	Sorbitol Dehydrogenase (SDH)
Clonality:	Polyclonal
Reactivity:	Rat
Tested Applications:	WB, IHC, IF/ICC
Host:	Rabbit
Recommended dilutions:	WB: 0.01-2 µg/ml, IHC: 5-20 µg/ml, IF/ICC: 5-20 µg/ml. Optimal dilutions/concentrations should be determined by the end user.
Conjugation:	Unconjugated
Immunogen:	SDH (Ala2-Pro357)
Form:	Liquid
Purification:	Purified by antigen-specific affinity chromatography, followed by Protein A affinity chromatography.
Storage:	Aliquot and store at -20°C. Avoid repeated freeze/thaw cycles.
UniProt Primary AC:	P27867 (UniProt , ExPASy)
KEGG:	rno:24788
String:	10116.ENSRNOP00000023350
Buffer:	0.01 M PBS, pH 7.4, containing 0.05% Proclin-300, 50% glycerol.
Note:	THIS PRODUCT IS FOR RESEARCH USE ONLY. NOT FOR USE IN DIAGNOSTIC, THERAPEUTIC OR COSMETIC PROCEDURES. NOT FOR HUMAN OR ANIMAL CONSUMPTION.