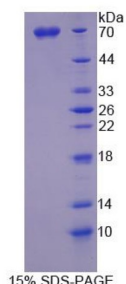


Human SPARC Like Protein 1 (SPARCL1) Protein

Catalogue No.: abx167836



SDS-PAGE analysis of SPARC Like Protein 1 Protein.

SPARC Like Protein 1 is a recombinant Human protein expressed in E. coli.

Target: SPARC Like Protein 1 (SPARCL1)

Origin: Human

Expression: Recombinant

Tested Applications: WB, SDS-PAGE

Host: E. coli

Conjugation: Unconjugated

Form: Lyophilized

Activity: Not tested

Purity: > 95%

Reconstitution: To keep the original salt concentration, we recommend reconstituting to the original concentration prior to lyophilization (see Concentration) in ddH₂O. If a lower concentration is required, dilute in PBS, pH 7.4. If a higher concentration is required, the product can be reconstituted directly in PBS, pH 7.4, though please note that this will change the overall salt concentration. The stock concentration should be between 0.1-1.0 mg/ml. Do not vortex.

Storage: Store at 2-8°C for up to one month. For long-term storage, store at -80°C. Avoid repeated freeze/thaw cycles.

UniProt Primary AC: Q14515 ([UniProt](#), [ExPASy](#))

KEGG: hsa:8404

Datasheet

Version: 2.0.0

Revision date: 04 Oct 2025



String: [9606.ENSF00000414856](#)

Molecular Weight: Calculated MW: 57.5 kDa

Sequence Fragment: Gly298-His545

Tag: N-terminal His tag and GST tag

Buffer: Prior to lyophilization: PBS, pH 7.4, containing 0.01% Sarcosyl, 1 mM DTT, 5% Trehalose and Proclin-300.

Concentration: Prior to lyophilization: 200 µg/ml

Note: THIS PRODUCT IS FOR RESEARCH USE ONLY. NOT FOR USE IN DIAGNOSTIC, THERAPEUTIC OR COSMETIC PROCEDURES. NOT FOR HUMAN OR ANIMAL CONSUMPTION.

For Reference Only