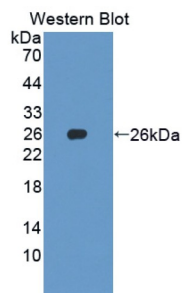
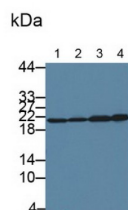


S-Phase Kinase Associated Protein 1 (SKP1) Antibody

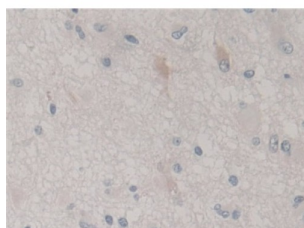
Catalogue No.: abx128202



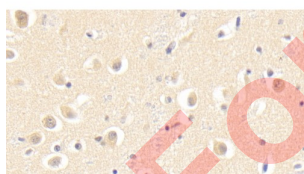
Western blot analysis of recombinant Human SKP1 using S-Phase Kinase Associated Protein 1 (SKP1) Antibody.



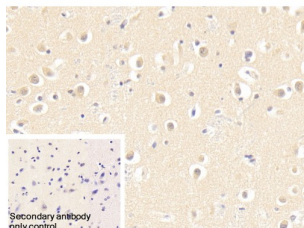
Western blot analysis of (1) HeLa cell lysate, (2) 293T cell lysate, (3) Pig Cerebrum tissue, and (4) Rat Cerebrum tissue using S-Phase Kinase Associated Protein 1 (SKP1) Antibody and HRP-conjugated Goat Anti-Rabbit antibody ([abx400043](#), 0.2 µg/ml)..



Immunohistochemistry analysis of paraffin-embedded Human Glioma Tissue, with DAB staining, using Human SKP1 Antibody (30 µg/ml) and HRP-conjugated Goat Anti-Rabbit antibody ([abx400043](#), 2 µg/ml)



Immunohistochemistry analysis of paraffin-embedded Human Cerebrum Tissue, with DAB staining, using Human SKP1 Antibody (20 µg/ml) and HRP-conjugated Goat Anti-Rabbit antibody ([abx400043](#), 2 µg/ml).



Immunohistochemistry analysis of paraffin-embedded Human Cerebrum Tissue, with DAB staining, using Human SKP1 Antibody (20 µg/ml) and HRP-conjugated Goat Anti-Rabbit antibody ([abx400043](#), 2 µg/ml). Negative control performed using PBS instead of Human SKP1 Antibody.

Datasheet

Version: 6.0.0
Revision date: 06 Oct 2025



SKP1 Antibody is a Rabbit Polyclonal against SKP1.

Target:	S-Phase Kinase Associated Protein 1 (SKP1)
Clonality:	Polyclonal
Reactivity:	Human
Tested Applications:	WB, IHC
Host:	Rabbit
Recommended dilutions:	WB: 0.5-3 µg/ml, IHC: 5-30 µg/ml. Optimal dilutions/concentrations should be determined by the end user.
Conjugation:	Unconjugated
Immunogen:	abx166120 - Recombinant SKP1 (Met1-Lys163) expressed in E. coli
Form:	Liquid
Purification:	Purified by antigen-specific affinity chromatography, followed by Protein A affinity chromatography.
Storage:	Aliquot and store at -20°C. Avoid repeated freeze/thaw cycles.
UniProt Primary AC:	P63208 (UniProt , ExpASY)
KEGG:	hsa:6500
String:	9606.ENSP00000231487
Buffer:	0.01 M PBS, pH 7.4, containing 0.05% Proclin-300, 50% glycerol.
Specificity:	Cross-reacts with Rat and Pig SKP1.
Concentration:	0.47 mg/ml
Note:	THIS PRODUCT IS FOR RESEARCH USE ONLY. NOT FOR USE IN DIAGNOSTIC, THERAPEUTIC OR COSMETIC PROCEDURES. NOT FOR HUMAN OR ANIMAL CONSUMPTION.