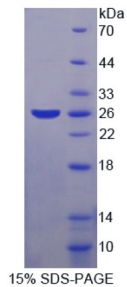


Human S-Phase Kinase Associated Protein 1 (SKP1) Protein

Catalogue No.: abx166120



SDS-PAGE analysis of SKP1 Protein.

Human SKP1 Protein is a recombinant Human protein expressed in E. coli.

This protein is the immunogen for the following antibodies: [abx128202](#)

Target: S-Phase Kinase Associated Protein 1 (SKP1)

Origin: Human

Expression: Recombinant

Tested Applications: WB, SDS-PAGE

Host: E. coli

Conjugation: Unconjugated

Form: Lyophilized

Activity: Not tested

Purity: > 95%

Reconstitution: Reconstitute in ddH₂O to a concentration between 0.1-1.0 mg/ml. Do not vortex.

Storage: Store at 2-8°C for up to one month. For long-term storage, store at -80°C. Avoid repeated freeze/thaw cycles.

UniProt Primary AC: P63208 ([UniProt](#), [ExPASy](#))

KEGG: hsa:6500

String: [9606.ENSP00000231487](#)

Datasheet

Version: 3.0.0

Revision date: 08 Oct 2025



Molecular Weight: Calculated MW: 22.4 kDa
Observed MW (SDS-PAGE): 26 kDa

Sequence Fragment: Met1-Lys163

Tag: N-terminal His tag

Buffer: Prior to lyophilization: 100 mM NaHCO₃, 500 mM NaCl, pH 8.3, containing 1 mM EDTA, 1 mM DTT, 0.01% Sarcosyl, 5% Trehalose and Proclin-300.

Concentration: Prior to lyophilization: 200 µg/ml

Note: THIS PRODUCT IS FOR RESEARCH USE ONLY. NOT FOR USE IN DIAGNOSTIC, THERAPEUTIC OR COSMETIC PROCEDURES. NOT FOR HUMAN OR ANIMAL CONSUMPTION.

For Reference Only