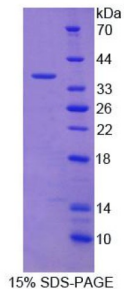


Human Statherin (STATH) Protein

Catalogue No.: abx166464



SDS-PAGE analysis of recombinant Human Statherin Protein.

Human Statherin Protein is a recombinant Human protein expressed in *E. coli*.

This protein is the immunogen for the following antibodies: [abx100663](#), [abx174635](#)

Target: Statherin (STATH)

Origin: Human

Expression: Recombinant

Tested Applications: WB, SDS-PAGE

Host: *E. coli*

Conjugation: Unconjugated

Form: Lyophilized

Purity: > 95%

Reconstitution: To keep the original salt concentration, we recommend reconstituting to the original concentration prior to lyophilization (see Concentration) in ddH₂O. If a lower concentration is required, dilute in PBS, pH 7.4. If a higher concentration is required, the product can be reconstituted directly in PBS, pH 7.4, though please note that this will change the overall salt concentration. The stock concentration should be between 0.1-1.0 mg/ml. Do not vortex.

Storage: Store at 2-8 °C for up to one month. Store at -80 °C for up to one year. Avoid repeated freeze/thaw cycles.

UniProt Primary AC: P02808 ([UniProt](#), [ExPASy](#))

Gene Symbol: STATH

Datasheet

Version: 2.0.0
Revision date: 24 May 2025



GeneID:	6779
OMIM:	184470
HGNC:	11369
Ensembl:	ENSG00000126549
Molecular Weight:	Calculated MW: 37.3 kDa
Sequence Fragment:	Met1-Phe62
Sequence:	MKFLVFAFIL ALMVSMIGAD SSEEKFLRRI GRFGYGYGPY QPVPEQPLYP QPYQPQYQQY TF
Tag:	N-terminal His tag and GST tag
Buffer:	Prior to lyophilization: PBS, pH 7.4, containing 0.01% Sarcosyl, 1 mM DTT, 5% Trehalose and Proclin-300.
Activity:	Not tested
Concentration:	Prior to lyophilization: 200 µg/ml
Note:	THIS PRODUCT IS FOR RESEARCH USE ONLY. NOT FOR USE IN DIAGNOSTIC, THERAPEUTIC OR COSMETIC PROCEDURES. NOT FOR HUMAN OR ANIMAL CONSUMPTION.