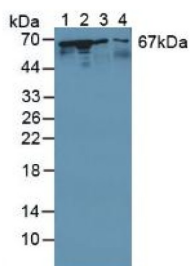
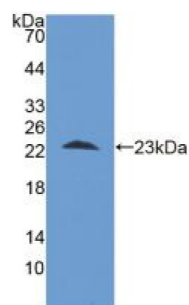


Stress Induced Phosphoprotein 1 (STIP1) Antibody

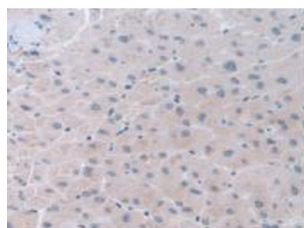
Catalogue No.: abx129243



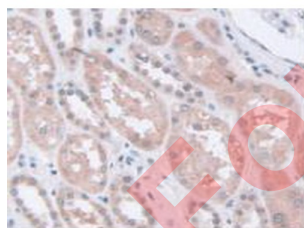
Western blot analysis of (1) Human Lung Tissue, (2) Human Jurkat Cells, (3) Bovine Testis Tissue and (4) Bovine Spleen Tissue.



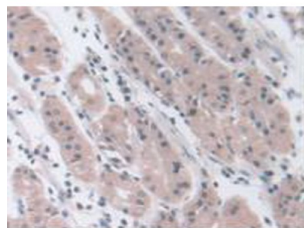
Western blot analysis of recombinant Human STIP1.



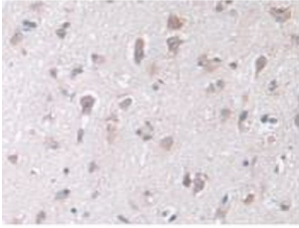
IHC-P analysis of Human Liver Tissue, with DAB staining.



IHC-P analysis of Human Kidney Tissue, with DAB staining.



IHC-P analysis of Human Stomach Tissue, with DAB staining.



IHC-P analysis of Human Brain Tissue, with DAB staining.

Stress Induced Phosphoprotein 1 Antibody is a Rabbit Polyclonal against Stress Induced Phosphoprotein 1.

Target:	Stress Induced Phosphoprotein 1 (STIP1)
Clonality:	Polyclonal
Reactivity:	Human
Tested Applications:	WB, IHC, IF/ICC
Host:	Rabbit
Recommended dilutions:	WB: 0.01-2 µg/ml, IHC: 5-20 µg/ml, IF/ICC: 5-20 µg/ml. Optimal dilutions/concentrations should be determined by the end user.
Conjugation:	Unconjugated
Immunogen:	STIP1 (Met1-Lys169)
Form:	Liquid
Purification:	Purified by antigen-specific affinity chromatography, followed by Protein A affinity chromatography.
Storage:	Aliquot and store at -20°C. Avoid repeated freeze/thaw cycles.
UniProt Primary AC:	P31948 (UniProt , ExPASy)
KEGG:	hsa:10963
String:	9606.ENSP00000351646
Buffer:	0.01 M PBS, pH 7.4, containing 0.05% Proclin-300, 50% glycerol.
Concentration:	0.62 mg/ml

Datasheet

Version: 2.0.0

Revision date: 14 Sep 2025



Note:

THIS PRODUCT IS FOR RESEARCH USE ONLY. NOT FOR USE IN DIAGNOSTIC, THERAPEUTIC OR COSMETIC PROCEDURES. NOT FOR HUMAN OR ANIMAL CONSUMPTION.

For Reference Only