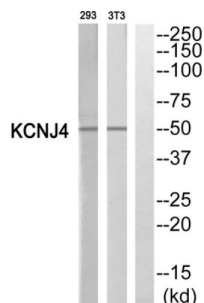


## Potassium Voltage-Gated Channel Subfamily J Member 4 (KCNJ4) Antibody

Catalogue No.: abx015147



Western blot analysis of extracts from 293 cells and NIH/3T3 cells, using KCNJ4 antibody.

Rabbit polyclonal antibody against KCNJ4 protein. Immunogen region is Internal.

|                               |  |
|-------------------------------|--|
| <b>Target:</b>                | Potassium Voltage-Gated Channel Subfamily J Member 4 (KCNJ4)   |
| <b>Clonality:</b>             | Polyclonal   |
| <b>Reactivity:</b>            | Human, Mouse, Rat  |
| <b>Tested Applications:</b>   | ELISA, WB  |
| <b>Host:</b>                  | Rabbit   |
| <b>Recommended dilutions:</b> | WB: 1/500 - 1/3000, ELISA: 1/40000. Optimal dilutions/concentrations should be determined by the end user. |
| <b>Conjugation:</b>           | Unconjugated   |
| <b>Immunogen:</b>             | The antiserum was produced against synthesized peptide derived from internal of human KCNJ4.               |
| <b>Isotype:</b>               | IgG  |
| <b>Form:</b>                  | Liquid   |
| <b>Purification:</b>          | Purified from rabbit antiserum by affinity chromatography using epitope-specific immunogen.                |
| <b>Storage:</b>               | Aliquot and store at -20°C. Avoid repeated freeze/thaw cycles.   |
| <b>UniProt Primary AC:</b>    | P48050 ( <a href="#">UniProt</a> , <a href="#">ExPASy</a> )  |
| <b>KEGG:</b>                  | hsa:3761   |

# Datasheet

Version: 3.0.0

Revision date: 06 Jun 2025



**String:** [9606.ENSF00000306497](#)

**Buffer:** PBS (without  $Mg^{2+}$  and  $Ca^{2+}$ ), pH 7.4, 150 mM NaCl, 0.02% sodium azide, 50% glycerol.

**Concentration:** 1 mg/ml

**Note:** THIS PRODUCT IS FOR RESEARCH USE ONLY. NOT FOR USE IN DIAGNOSTIC, THERAPEUTIC OR COSMETIC PROCEDURES. NOT FOR HUMAN OR ANIMAL CONSUMPTION.

For Reference Only