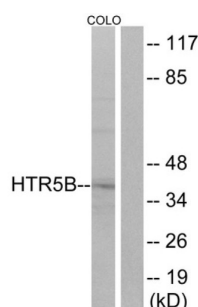
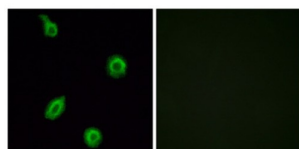


HTR5B Antibody

Catalogue No.: abx015214



Western blot analysis of extracts from COLO cells, using HTR5B antibody. The lane on the right is blocked with the synthesised peptide.



Immunofluorescence analysis of HUVEC cells, using HTR5B antibody. The image on the right is blocked with the synthesised peptide.

Rabbit polyclonal antibody against HTR5B protein.

Target: HTR5B

Clonality: Polyclonal

Reactivity: Mouse, Rat

Tested Applications: ELISA, WB, IF/ICC

Host: Rabbit

Recommended dilutions: WB: 1/500 - 1/3000, IF/ICC: 1/100 - 1/500, ELISA: 1/40000. Optimal dilutions/concentrations should be determined by the end user.

Conjugation: Unconjugated

Immunogen: The antiserum was produced against synthesized peptide derived from the internal region of human HTR5B.

Isotype: IgG

Form: Liquid

Purification: Purified from rabbit antiserum by affinity chromatography using epitope-specific immunogen.

Datasheet

Version: 2.0.0

Revision date: 07 Oct 2025



Storage:	Aliquot and store at -20°C. Avoid repeated freeze/thaw cycles.
UniProt Primary AC:	P35365 (UniProt , ExPASy)
KEGG:	rno:79247
String:	10116.ENSRNOP00000003441
Buffer:	PBS (without Mg^{2+} and Ca^{2+}), pH 7.4, 150 mM NaCl, 0.02% sodium azide, 50% glycerol.
Concentration:	1 mg/ml
Note:	THIS PRODUCT IS FOR RESEARCH USE ONLY. NOT FOR USE IN DIAGNOSTIC, THERAPEUTIC OR COSMETIC PROCEDURES. NOT FOR HUMAN OR ANIMAL CONSUMPTION.

For Reference Only