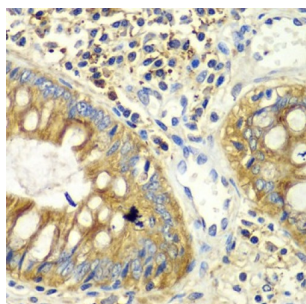
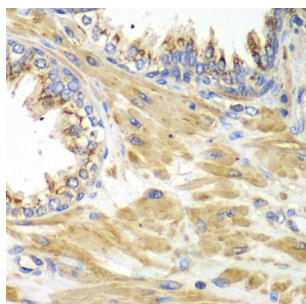


## Protein Interacting With Protein Kinase C Alpha 1 (PICK1) Antibody

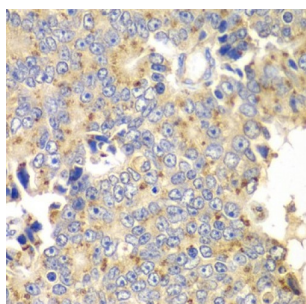
Catalogue No.: abx001280



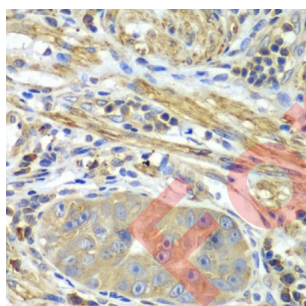
Immunohistochemistry of paraffin-embedded human colon using PICK1 Antibody (1/100 dilution, 40x lens). Microwave antigen retrieval was performed in 10 mM PBS buffer pH 7.2 before commencing with IHC staining protocol.



Immunohistochemistry of paraffin-embedded human prostate using PICK1 Antibody (1/100 dilution, 40x lens). Microwave antigen retrieval was performed in 10 mM PBS buffer pH 7.2 before commencing with IHC staining protocol.



Immunohistochemistry of paraffin-embedded human prostate cancer using PICK1 antibody (1/100 dilution, 40x lens). Microwave antigen retrieval was performed in 10 mM PBS buffer pH 7.2 before commencing with IHC staining protocol.



Immunohistochemistry of paraffin-embedded human gastric cancer using PICK1 antibody (1/100 dilution, 40x lens). Microwave antigen retrieval was performed in 10 mM PBS buffer pH 7.2 before commencing with IHC staining protocol.

PICK1 Antibody is a Rabbit Polyclonal antibody against PICK1. Protein interacting with C kinase 1 (PICK1) is a PDZ-domain containing protein that is located in the perinuclear region and is phosphorylated in response to PKC $\alpha$  activation. PKC $\alpha$ , which is essential for the regulation of proliferation and differentiation in numerous cell types, contains within its catalytic region a PDZ-binding domain that is absent from other PKC isoforms. Mutation of the PICK1 PDZ domain inhibits the binding of PICK1 to PKC $\alpha$ . PICK1 also interacts with the carboxy terminus of  $\alpha$ -amino-3-hydroxy-5-methyl-isoxazole-4-propionic acid (AMPA) receptor, a neurotransmitter receptor located at excitatory synapses, suggesting that PICK1 plays a role in the modulation of synaptic transmission by targeting and anchoring AMPA to specific synapses.

# Datasheet

Version: 5.0.0  
Revision date: 14 Jul 2025



<b>Target:</b>	Protein Interacting With Protein Kinase C Alpha 1 (PICK1)
<b>Clonality:</b>	Polyclonal
<b>Reactivity:</b>	Human
<b>Tested Applications:</b>	IHC
<b>Host:</b>	Rabbit
<b>Recommended dilutions:</b>	IHC-P: 1/50 - 1/200. Not tested in IHC-F. Optimal dilutions/concentrations should be determined by the end user.
<b>Conjugation:</b>	Unconjugated
<b>Immunogen:</b>	A synthetic peptide corresponding to human PICK1
<b>Isotype:</b>	IgG
<b>Form:</b>	Liquid
<b>Purification:</b>	Purified by affinity chromatography.
<b>Storage:</b>	Aliquot and store at -20°C. Avoid repeated freeze/thaw cycles.
<b>UniProt Primary AC:</b>	Q9NRD5 ( <a href="#">UniProt</a> , <a href="#">ExPASy</a> )
<b>Gene Symbol:</b>	PICK1
<b>GeneID:</b>	<a href="#">9463</a>
<b>NCBI Accession:</b>	NP_036539.1
<b>String:</b>	<a href="#">9606.ENSP00000385205</a>
<b>Molecular Weight:</b>	Calculated MW: 39 kDa/46 kDa
<b>Buffer:</b>	PBS, pH 7.3, containing 0.02% sodium azide, 50% glycerol.
<b>Concentration:</b>	1 mg/ml
<b>Note:</b>	THIS PRODUCT IS FOR RESEARCH USE ONLY. NOT FOR USE IN DIAGNOSTIC, THERAPEUTIC OR COSMETIC PROCEDURES. NOT FOR HUMAN OR ANIMAL CONSUMPTION.