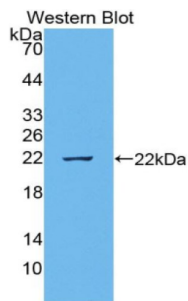
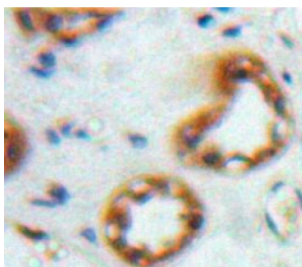


Tumor Necrosis Factor Ligand Superfamily Member 15 (TNFSF15) Antibody

Catalogue No.: abx130303



Western blot analysis of the recombinant protein.



IHC-P analysis of Kidney tissue, with DAB staining.

Tumor Necrosis Factor Ligand Superfamily Member 15 (TNFSF15) Antibody is a Rabbit Polyclonal against Tumor Necrosis Factor Ligand Superfamily Member 15 (TNFSF15).

Target: Tumor Necrosis Factor Ligand Superfamily Member 15 (TNFSF15)

Clonality: Polyclonal

Reactivity: Rat

Tested Applications: WB, IHC, IF/ICC

Host: Rabbit

Recommended dilutions: WB: 0.01-2 µg/ml, IHC: 5-20 µg/ml, IF/ICC: 5-20 µg/ml. Optimal dilutions/concentrations should be determined by the end user.

Conjugation: Unconjugated

Immunogen: VEGI (Asp70-Asn230)

Form: Liquid

Purification: Purified by antigen-specific affinity chromatography, followed by Protein A affinity chromatography.

Datasheet

Version: 2.0.0

Revision date: 30 Aug 2025



Storage: Aliquot and store at -20°C. Avoid repeated freeze/thaw cycles.

Buffer: 0.01 M PBS, pH 7.4, containing 0.05% Proclin-300, 50% glycerol.

Note: THIS PRODUCT IS FOR RESEARCH USE ONLY. NOT FOR USE IN DIAGNOSTIC, THERAPEUTIC OR COSMETIC PROCEDURES. NOT FOR HUMAN OR ANIMAL CONSUMPTION.

For Reference Only