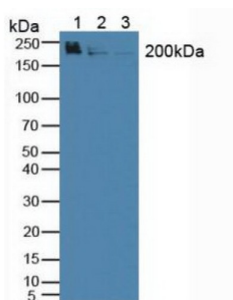
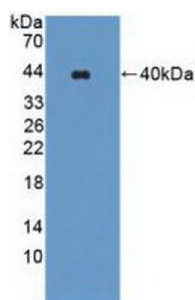


WNK Lysine Deficient Protein Kinase 1 (WNK1) Antibody

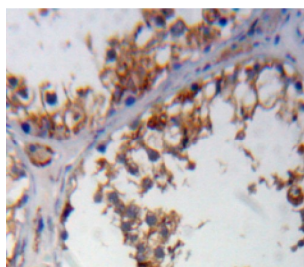
Catalogue No.: abx129026



Western blot analysis of (1) Human 293T Cells, (2) Porcine Liver Tissue and (3) Porcine Kidney Tissue.



Western blot analysis of recombinant Human WNK1.



IHC-P analysis of testis tissue, with DAB staining.

WNK Lysine Deficient Protein Kinase 1 Antibody is a Rabbit Polyclonal against WNK Lysine Deficient Protein Kinase 1.

Target: WNK Lysine Deficient Protein Kinase 1 (WNK1)

Clonality: Polyclonal

Reactivity: Human

Tested Applications: WB, IHC, IF/ICC

Host: Rabbit

Recommended dilutions: WB: 1-5 µg/ml, IHC: 5-20 µg/ml, IF/ICC: 5-20 µg/ml. Optimal dilutions/concentrations should be determined by the end user.

Conjugation: Unconjugated

Datasheet

Version: 3.0.0

Revision date: 22 Dec 2025



Immunogen:	WNK1 (Lys1954-Ala2231)
Form:	Liquid
Purification:	Purified by antigen-specific affinity chromatography, followed by Protein A affinity chromatography.
Storage:	Aliquot and store at -20°C. Avoid repeated freeze/thaw cycles.
Buffer:	0.01 M PBS, pH 7.4, containing 0.05% Proclin-300, 50% glycerol.
Note:	THIS PRODUCT IS FOR RESEARCH USE ONLY. NOT FOR USE IN DIAGNOSTIC, THERAPEUTIC OR COSMETIC PROCEDURES. NOT FOR HUMAN OR ANIMAL CONSUMPTION.

For Reference Only