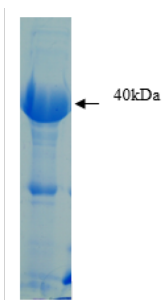


Chlamydia Pneumonia Protein

Catalogue No.: abx260191



Chlamydia Pneumonia is a recombinant viral antigen from chlamydia trachomatis. Recombinant Chlamydia pneumonia antigen, produced in E.coli is derived from VD2-VD3 region of the CP major outer membrane protein (this region is recognized only by Chlamydia pneumonia antibody), it contains 160 amino acids and fused with a His Tag at C-terminus, having a MW of about 21.5kDa, the protein forms a monomer and a dimer on SDS-PAGE gel, the majority of the protein forms a dimer, which migrates at a MW of 42kDa. Chlamydia pneumonia is purified by proprietary chromatographic technique.

Target: Chlamydia Pneumonia**Expression:** Recombinant**Conjugation:** Unconjugated**Form:** Liquid**Purity:** > 95%**Storage:** Store at -20 °C. Avoid repeated freeze/thaw cycles.**Buffer:** PBS buffer and 25mM arginine.**Note:** THIS PRODUCT IS FOR RESEARCH USE ONLY. NOT FOR USE IN DIAGNOSTIC, THERAPEUTIC OR COSMETIC PROCEDURES. NOT FOR HUMAN OR ANIMAL CONSUMPTION.