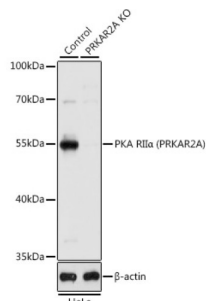
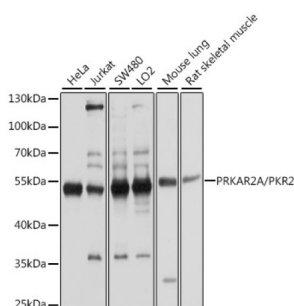


Protein Kinase cAMP-Dependent Type II Regulatory Subunit Alpha (PRKAR2A) Antibody

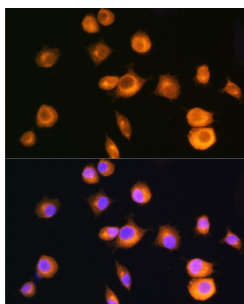
Catalogue No.: abx001289



Western blot analysis of lysates from wild type (WT) and PKA RII α (PRKAR2A)/PKR2 knockout (KO) HeLa cells, using [KO Validated] PKA RII α (PRKAR2A) Antibody at 1/1000 dilution. Secondary antibody: HRP-conjugated Goat anti-Rabbit IgG (H+L) at 1/10000 dilution. Lysates/proteins: 25 μ g per lane. Blocking buffer: 3% nonfat dry milk in TBST. Exposure time: 5s.



Western blot analysis of various lysates using [KO Validated] PKA RII α (PRKAR2A) Antibody at 1/1000 dilution. Secondary antibody: HRP-conjugated Goat anti-Rabbit IgG (H+L) at 1/10000 dilution. Lysates/proteins: 25 μ g per lane. Blocking buffer: 3% nonfat dry milk in TBST. Exposure time: 5s.



Immunofluorescence analysis of L929 cells using [KO Validated] PKA RII α (PRKAR2A)/PKR2 Antibody at dilution of 1/100 (40x lens). Secondary antibody: Cy3-conjugated Goat anti-Rabbit IgG (H+L) at 1/500 dilution. Blue: DAPI for nuclear staining.

PRKAR2A Antibody is a Rabbit Polyclonal antibody against PRKAR2A. The effects of cAMP in most tissues and cell types are mainly modulated via protein kinase A, a heterotetrameric protein complex consisting of two regulatory α and two catalytic β subunits. The regulatory subunit of cAMP-dependent protein kinase (PRKAR2A) is one of the regulatory subunits and the gene is located on chromosome region 3p21.3-p21.2. The expression of PRKAR2A is tightly regulated during spermatogenesis, a significant increase in expression of this gene was also found in the human myometrium during pregnancy. This antibody got two bands about 45 kDa and 50-55 kDa in western blotting, and the 50-55kDa may be caused by phosphorylation.

Target: Protein Kinase cAMP-Dependent Type II Regulatory Subunit Alpha (PRKAR2A)

Clonality: Polyclonal

Reactivity: Human, Mouse, Rat

Tested Applications: ELISA, WB, IF/ICC

Datasheet

Version: 7.0.0
Revision date: 29 Jul 2025



Host:	Rabbit
Recommended dilutions:	ELISA: 1 µg/ml, WB: 1/1000 - 1/2000, IF/ICC: 1/50 - 1/200. Optimal dilutions/concentrations should be determined by the end user.
Conjugation:	Unconjugated
Immunogen:	Recombinant protein corresponding to PRKAR2A. The exact sequence is proprietary.
Isotype:	IgG
Form:	Liquid
Purification:	Purified by affinity chromatography.
Storage:	Aliquot and store at -20°C. Avoid repeated freeze/thaw cycles.
UniProt Primary AC:	P13861 (UniProt , ExPASy)
Gene Symbol:	PRKAR2A
GeneID:	5576
NCBI Accession:	NP_004148.1
KEGG:	hsa:5576
String:	9606.ENSP00000265563
Molecular Weight:	Calculated MW: 46 kDa Observed MW: 46 kDa
Buffer:	PBS, pH 7.3, containing 0.09% sodium azide, 50% glycerol.
Concentration:	> 0.2 mg/ml
Note:	THIS PRODUCT IS FOR RESEARCH USE ONLY. NOT FOR USE IN DIAGNOSTIC, THERAPEUTIC OR COSMETIC PROCEDURES. NOT FOR HUMAN OR ANIMAL CONSUMPTION.