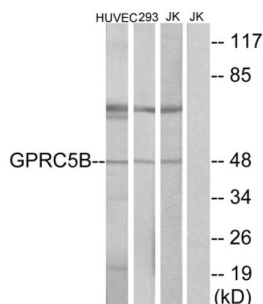
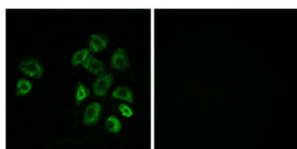


G Protein-Coupled Receptor Class C Group 5 Member B (GPRC5B) Antibody

Catalogue No.: abx015317



WB analysis of extracts from HUVEC cells, 293 cells and Jurkat cells, using GPRC5B antibody.



IF analysis of MCF-7 cells, using GPRC5B antibody. The image on the left was treated with the corresponding peptide.

Rabbit polyclonal antibody against GPRC5B protein. Immunogen region is Internal.

Target: G Protein-Coupled Receptor Class C Group 5 Member B (GPRC5B)

Clonality: Polyclonal

Reactivity: Human

Tested Applications: ELISA, WB, IF/ICC

Host: Rabbit

Recommended dilutions: ELISA: 1/1000, WB: 1/500 - 1/3000, IF/ICC: 1/100 - 1/500. Optimal dilutions/concentrations should be determined by the end user.

Conjugation: Unconjugated

Immunogen: The antiserum was produced against synthesized peptide derived from internal of Human GPRC5B.

Isotype: IgG

Form: Liquid

Datasheet

Version: 4.0.0
Revision date: 01 May 2025



Purification: Purified from rabbit antiserum by affinity chromatography using epitope-specific immunogen.

Storage: Aliquot and store at -20°C. Avoid repeated freeze/thaw cycles.

UniProt Primary AC: Q9NZH0 ([UniProt](#), [ExPASy](#))

String: [9606.ENSP00000300571](#)

Buffer: PBS (without Mg^{2+} and Ca^{2+}), pH 7.4, 150 mM NaCl, 0.02% sodium azide, 50% glycerol.

Specificity: Detects endogenous levels of total GPRC5B protein.

Concentration: 1 mg/ml

Note: THIS PRODUCT IS FOR RESEARCH USE ONLY. NOT FOR USE IN DIAGNOSTIC, THERAPEUTIC OR COSMETIC PROCEDURES. NOT FOR HUMAN OR ANIMAL CONSUMPTION.

For Reference Only