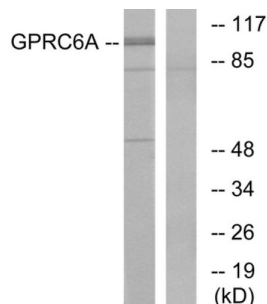
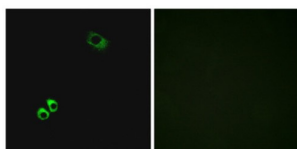


G-Protein Coupled Receptor Family C Group 6 Member A (GPC6A) Antibody

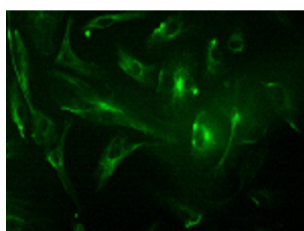
Catalogue No.: abx015319



Western blot analysis of extracts from Jurkat cells, using GPC6A antibody.



Immunofluorescence analysis of MCF-7 cells, using GPC6A antibody.



Immunofluorescence analysis of human cell line, using GPC6A antibody (1/100 dilution). Image kindly provided by Sophie Millar, University of Nottingham.

Rabbit polyclonal antibody against GPCR6A protein. Immunogen region is Internal.

Target: G-Protein Coupled Receptor Family C Group 6 Member A (GPC6A)

Clonality: Polyclonal

Reactivity: Human

Tested Applications: ELISA, WB, IF/ICC

Host: Rabbit

Recommended dilutions: WB: 1/500 - 1/3000, IF/ICC: 1/100 - 1/500, ELISA: 1/1000. Optimal dilutions/concentrations should be determined by the end user.

Datasheet

Version: 2.0.0
Revision date: 08 Mar 2025



Conjugation:	Unconjugated
Immunogen:	The antiserum was produced against synthesized peptide derived from internal of human GPC6A.
Isotype:	IgG
Form:	Liquid
Purification:	Purified from rabbit antiserum by affinity chromatography using epitope-specific immunogen.
Storage:	Aliquot and store at -20°C. Avoid repeated freeze/thaw cycles.
UniProt Primary AC:	Q5T6X5 (UniProt , ExPASy)
KEGG:	hsa:222545
String:	9606.ENSP00000309493
Buffer:	PBS (without Mg^{2+} and Ca^{2+}), pH 7.4, 150 mM NaCl, 0.02% sodium azide, 50% glycerol.
Concentration:	1 mg/ml
Note:	THIS PRODUCT IS FOR RESEARCH USE ONLY. NOT FOR USE IN DIAGNOSTIC, THERAPEUTIC OR COSMETIC PROCEDURES. NOT FOR HUMAN OR ANIMAL CONSUMPTION.