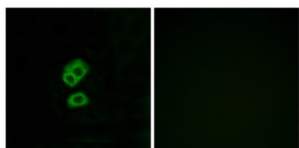


# Olfactory Receptor Family 2 Subfamily T Member 10 (OR2T10) Antibody

Catalogue No.: abx015366



Immunofluorescence analysis of MCF-7 cells, using OR2T10 antibody.

Rabbit polyclonal antibody against OR2T10 protein. Immunogen region is Internal.

<b>Target:</b>	Olfactory Receptor Family 2 Subfamily T Member 10 (OR2T10)
<b>Clonality:</b>	Polyclonal
<b>Reactivity:</b>	Human
<b>Tested Applications:</b>	ELISA, IF/ICC
<b>Host:</b>	Rabbit
<b>Recommended dilutions:</b>	IF/ICC: 1/100 - 1/500, ELISA: 1/1000. Optimal dilutions/concentrations should be determined by the end user.
<b>Conjugation:</b>	Unconjugated
<b>Immunogen:</b>	The antiserum was produced against synthesized peptide derived from internal of human OR2T10.
<b>Isotype:</b>	IgG
<b>Form:</b>	Liquid
<b>Purification:</b>	Purified from rabbit antiserum by affinity chromatography using epitope-specific immunogen.
<b>Storage:</b>	Aliquot and store at -20°C. Avoid repeated freeze/thaw cycles.
<b>UniProt Primary AC:</b>	Q8NGZ9 ( <a href="#">UniProt</a> , <a href="#">ExPASy</a> )
<b>KEGG:</b>	hsa:127069

# Datasheet

Version: 3.0.0

Revision date: 20 Jun 2025



**String:** [9606.ENSF00000329210](#)

**Buffer:** PBS (without  $Mg^{2+}$  and  $Ca^{2+}$ ), pH 7.4, 150 mM NaCl, 0.02% sodium azide, 50% glycerol.

**Concentration:** 1 mg/ml

**Note:** THIS PRODUCT IS FOR RESEARCH USE ONLY. NOT FOR USE IN DIAGNOSTIC, THERAPEUTIC OR COSMETIC PROCEDURES. NOT FOR HUMAN OR ANIMAL CONSUMPTION.

For Reference Only