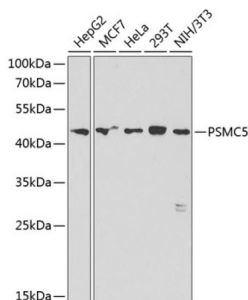


## 26S Proteasome Regulatory Subunit 8 (PSMC5) Antibody

Catalogue No.: abx001295



Western blot analysis of extracts of various cell lines using PSMC5 Antibody (1/1000 dilution).

PSMC5 Antibody is a Rabbit Polyclonal antibody against PSMC5. The 26S proteasome is a multicatalytic proteinase complex with a highly ordered structure composed of 2 complexes, a 20S core and a 19S regulator. The 20S core is composed of 4 rings of 28 non-identical subunits; 2 rings are composed of 7 alpha subunits and 2 rings are composed of 7 beta subunits. The 19S regulator is composed of a base, which contains 6 ATPase subunits and 2 non-ATPase subunits, and a lid, which contains up to 10 non-ATPase subunits. Proteasomes are distributed throughout eukaryotic cells at a high concentration and cleave peptides in an ATP/ubiquitin-dependent process in a non-lysosomal pathway. An essential function of a modified proteasome, the immunoproteasome, is the processing of class I MHC peptides. This gene encodes one of the ATPase subunits, a member of the triple-A family of ATPases which have a chaperone-like activity. In addition to participation in proteasome functions, this subunit may participate in transcriptional regulation since it has been shown to interact with the thyroid hormone receptor and retinoid X receptor-alpha. Two transcript variants encoding different isoforms have been found for this gene. [provided by RefSeq, Nov 2010].

**Target:** 26S Proteasome Regulatory Subunit 8 (PSMC5)

**Clonality:** Polyclonal

**Reactivity:** Human, Mouse

**Tested Applications:** WB

**Host:** Rabbit

**Recommended dilutions:** WB: 1/500 - 1/2000. Optimal dilutions/concentrations should be determined by the end user.

**Conjugation:** Unconjugated

**Immunogen:** Recombinant fusion protein corresponding to human PSMC5

**Isotype:** IgG

**Form:** Liquid

**Purification:** Purified by affinity chromatography.

# Datasheet

Version: 3.0.0  
Revision date: 06 Oct 2025



**Storage:** Aliquot and store at -20°C. Avoid repeated freeze/thaw cycles.

**UniProt Primary AC:** P62195 ([UniProt](#), [ExPASy](#))

**Gene Symbol:** PSMC5

**GeneID:** [5705](#)

**NCBI Accession:** NP\_002796.4

**KEGG:** hsa:5705

**String:** [9606.ENSP00000310572](#)

**Molecular Weight:** Calculated MW: 44 kDa/45 kDa  
Observed MW: 45 kDa

**Buffer:** PBS, pH 7.3, containing 0.02% sodium azide, 50% glycerol.

**Concentration:** 1 mg/ml

**Note:** THIS PRODUCT IS FOR RESEARCH USE ONLY. NOT FOR USE IN DIAGNOSTIC, THERAPEUTIC OR COSMETIC PROCEDURES. NOT FOR HUMAN OR ANIMAL CONSUMPTION.

For Reference Only