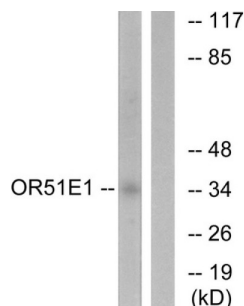
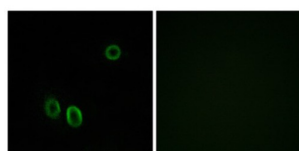


# Olfactory Receptor Family 51 Subfamily E Member 1 (OR51E1) Antibody

Catalogue No.: abx015370



Western blot analysis of extracts from HeLa cells, using OR51E1 antibody.



Immunofluorescence analysis of A549 cells, using OR51E1 antibody.

Rabbit polyclonal antibody against OR51E1 protein. Immunogen region is C-terminal.

**Target:** Olfactory Receptor Family 51 Subfamily E Member 1 (OR51E1)

**Clonality:** Polyclonal

**Reactivity:** Human

**Tested Applications:** ELISA, WB, IF/ICC

**Host:** Rabbit

**Recommended dilutions:** WB: 1/500 - 1/3000, IF/ICC: 1/100 - 1/500, ELISA: 1/20000. Optimal dilutions/concentrations should be determined by the end user.

**Conjugation:** Unconjugated

**Immunogen:** The antiserum was produced against synthesized peptide derived from C-terminal of human OR51E1.

**Isotype:** IgG

**Form:** Liquid

# Datasheet

Version: 2.0.0

Revision date: 18 Apr 2025



**Purification:** Purified from rabbit antiserum by affinity chromatography using epitope-specific immunogen.

**Storage:** Aliquot and store at -20°C. Avoid repeated freeze/thaw cycles.

**UniProt Primary AC:** Q8TCB6 ([UniProt](#), [ExPASy](#))

**KEGG:** hsa:143503

**String:** [9606.ENSP00000380155](#)

**Buffer:** PBS (without  $Mg^{2+}$  and  $Ca^{2+}$ ), pH 7.4, 150 mM NaCl, 0.02% sodium azide, 50% glycerol.

**Concentration:** 1 mg/ml

**Note:** THIS PRODUCT IS FOR RESEARCH USE ONLY. NOT FOR USE IN DIAGNOSTIC, THERAPEUTIC OR COSMETIC PROCEDURES. NOT FOR HUMAN OR ANIMAL CONSUMPTION.

For Reference Only