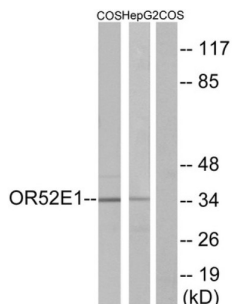
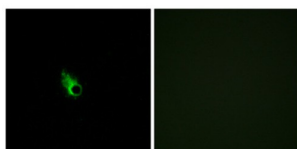


Olfactory Receptor Family 52 Subfamily E Member 1 (gene/pseudogene) (OR52E1) Antibody

Catalogue No.: abx015377



Western blot analysis of extracts from COS-7 cells and HepG2 cells, using OR52E1 antibody.



Immunofluorescence analysis of HeLa cells, using OR52E1 antibody.

Rabbit polyclonal antibody against OR52E1 protein. Immunogen region is Internal.

Target:	Olfactory Receptor Family 52 Subfamily E Member 1 (gene/pseudogene) (OR52E1)
Clonality:	Polyclonal
Reactivity:	Human
Tested Applications:	ELISA, WB, IF/ICC
Host:	Rabbit
Recommended dilutions:	WB: 1/500 - 1/3000, IF/ICC: 1/100 - 1/500, ELISA: 1/1000. Optimal dilutions/concentrations should be determined by the end user.
Conjugation:	Unconjugated
Immunogen:	The antiserum was produced against synthesized peptide derived from internal of human OR52E1.
Isotype:	IgG
Form:	Liquid

Datasheet

Version: 3.0.0
Revision date: 12 Jun 2025



Purification:	Purified from rabbit antiserum by affinity chromatography using epitope-specific immunogen.
Storage:	Aliquot and store at -20°C. Avoid repeated freeze/thaw cycles.
UniProt Primary AC:	Q8NGJ3 (UniProt , ExPASy)
KEGG:	hsa:79296
Buffer:	PBS (without Mg^{2+} and Ca^{2+}), pH 7.4, 150 mM NaCl, 0.02% sodium azide, 50% glycerol.
Concentration:	1 mg/ml
Note:	THIS PRODUCT IS FOR RESEARCH USE ONLY. NOT FOR USE IN DIAGNOSTIC, THERAPEUTIC OR COSMETIC PROCEDURES. NOT FOR HUMAN OR ANIMAL CONSUMPTION.

For Reference Only